

# Williamsburg/Haydenville Mill River Greenway Project

---



Williamsburg Mill River Greenway Committee  
2017

MassDOT Project #608787



# Mill River Rte. 9 Corridor



# Mill River Greenway Objectives:

---

1. Create a Shared Use Path Greenway, connecting Williamsburg and Haydenville Centers within the existing Route 9 public R.O.W. along the Mill River.
  - 2013: Feasibility Study.
  - 2014: Route Options.
  - 2015-16: Route Selection and Project Need Form submittal.
  - 2017: MassDOT Project Approval & Route Survey Work
  - 2018-19: Engineering Design Work
2. Utilize the Mill River corridor as a living link to our industrial and agricultural history, our river ecology, and present day recreational, economic, and cultural opportunities within our community.
  - A Linear Park Marking the Mill River Time Line.



# Meekins River Park Model

Create parks at the River edge and explore pathway connections



Repair Wall, install infiltration drains and new fence for safety



# Meekins Park Terrace at Old Dam Site

Create park settings to honor and maintain historical sites.



# Rte. 9 R.O.W Edge Types in River Corridor

Williamsburg Center

RTE 9 EDGE CONDITIONS

Edge Type 1

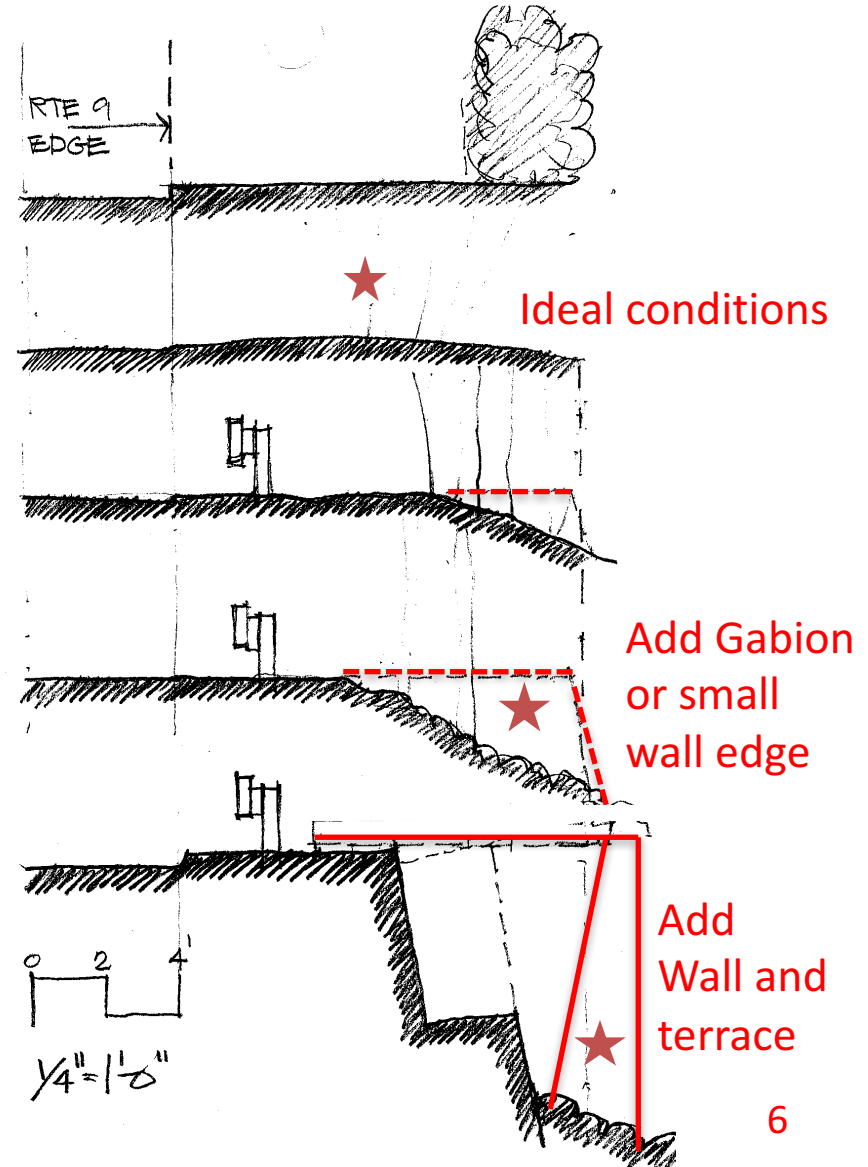
Edge Type 2

Edge Type 3

Edge Type 4

Edge Type 5

Haydenville Center



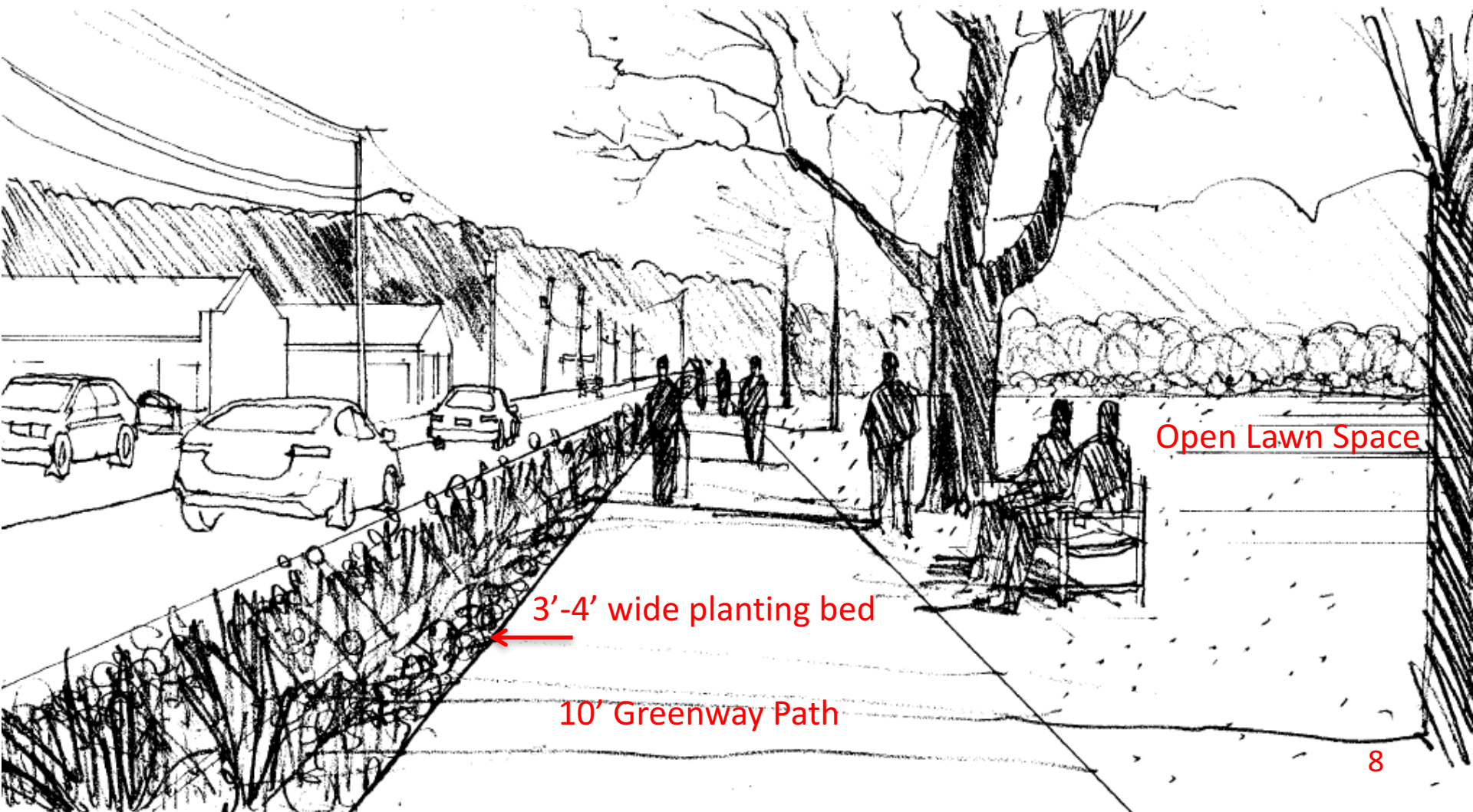


# Greenway at James School Site: Edge Type 1





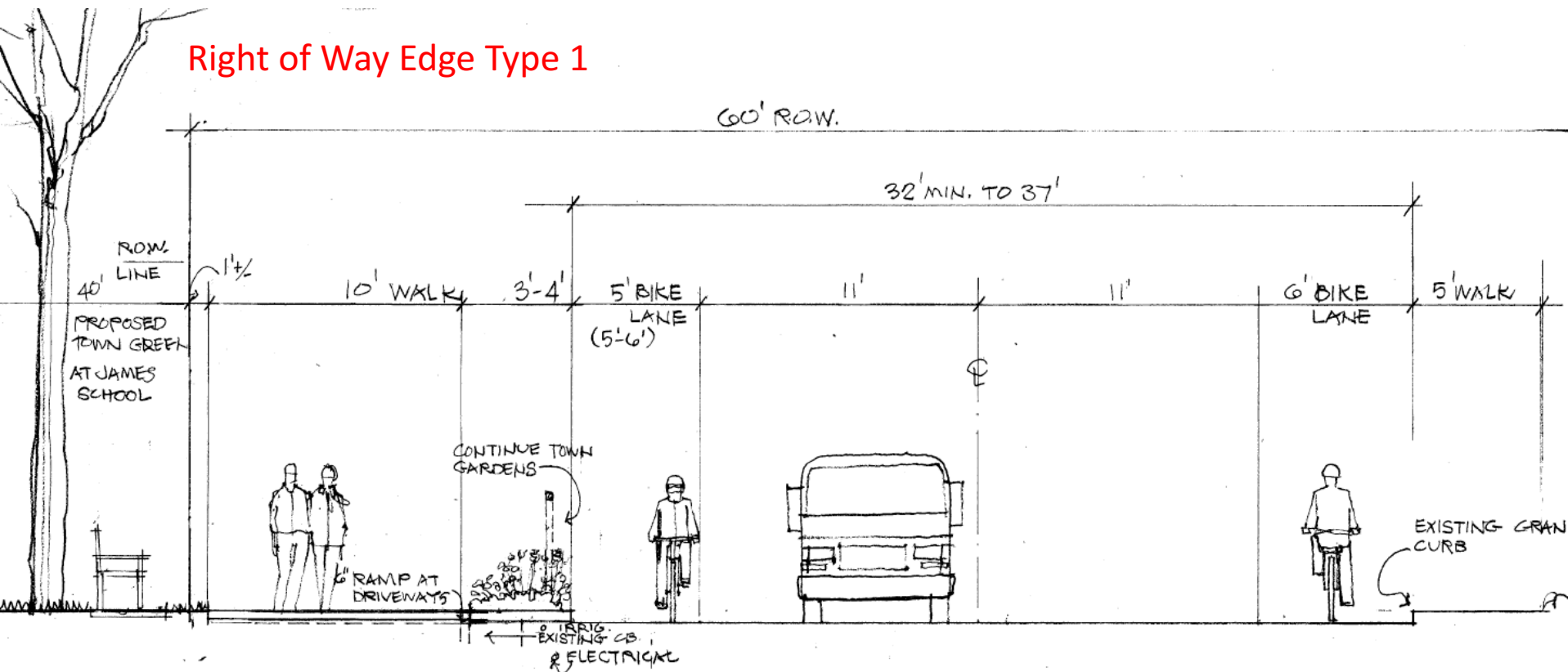
# James School Greenway View East





# Greenway at James School Site Viewing West

## Right of Way Edge Type 1



STA. 165+60: MODIFIED SECTION FOR STA. 165+00 - 176+00 (WILLIAMSBURG CENTER SECTION)

1/4" = 1'-0"

# East Toward Pharmacy

Type 2 & 3 Edge Condition





# Cumberland Farms to Pharmacy

Ideal Road Edge Condition Types (1 and 2)





# Pharmacy Park From Rte. 9 Bridge

End of Existing Public Walkway at Bridge



Existing River Park



# South Edge of Pharmacy Bridge (East)

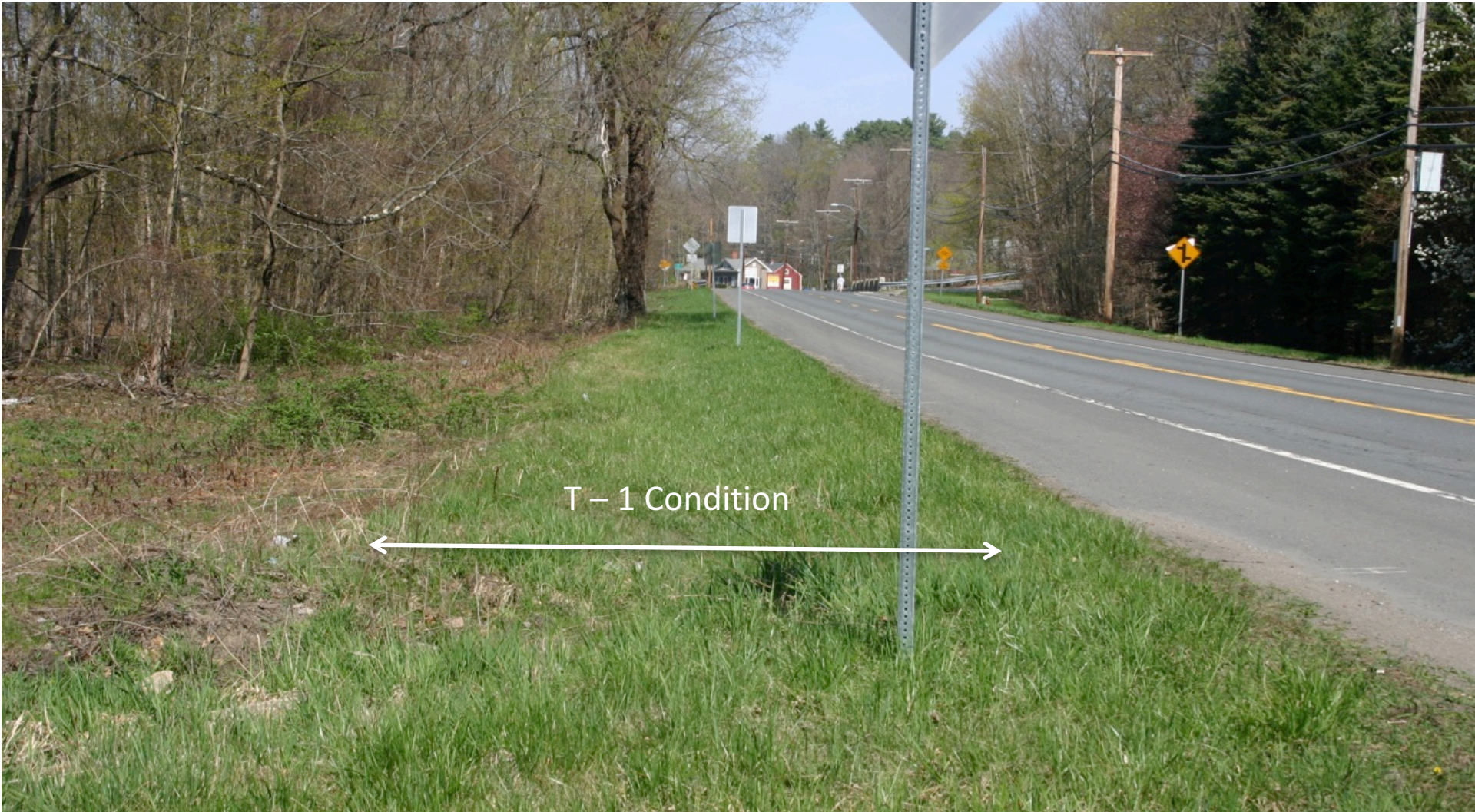
Pedestrian Bridge Required for Walkway Along River Bank





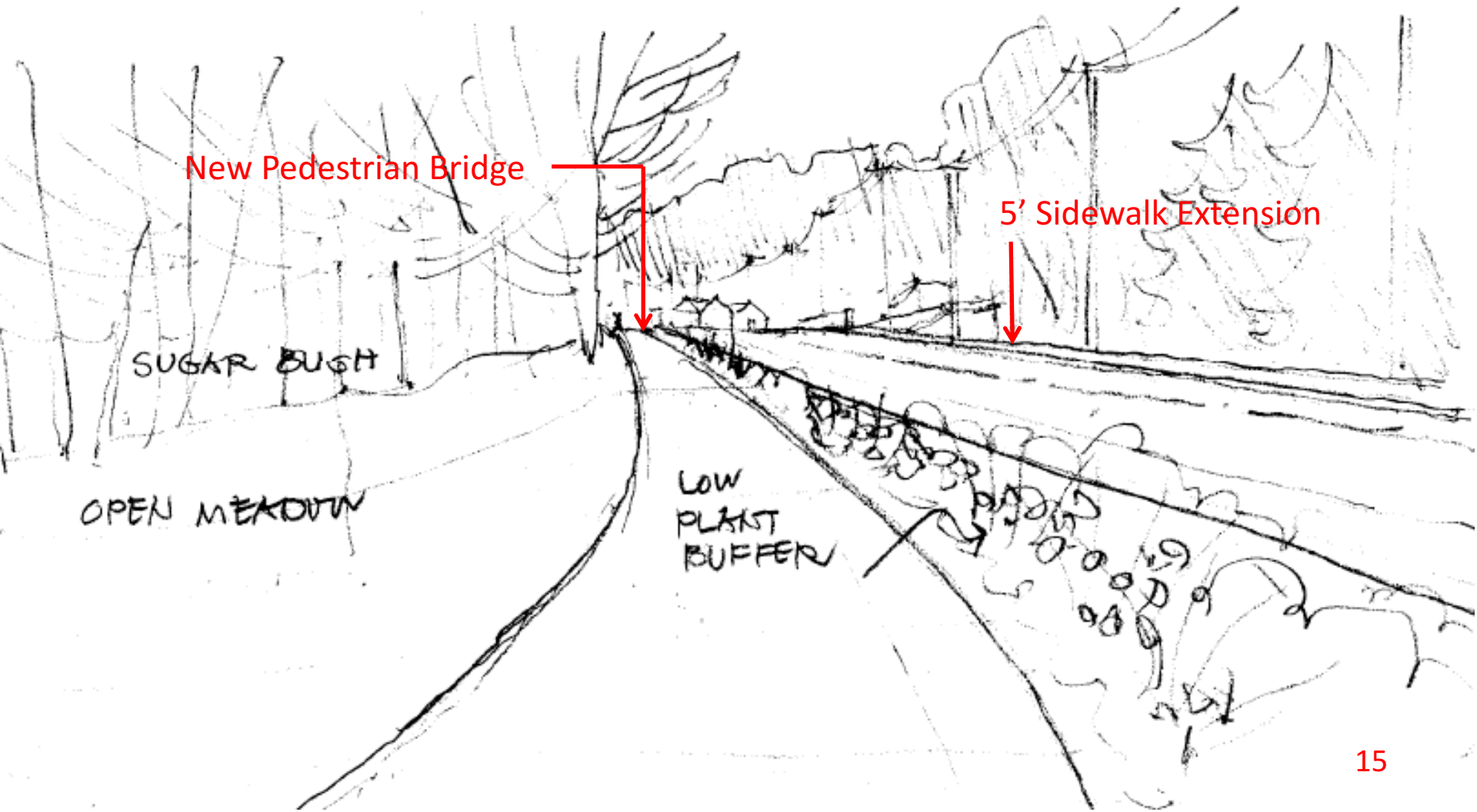
# Rte. 9 West Toward Pharmacy Bridge

Ideal Edge Condition for Pedestrian Walkway



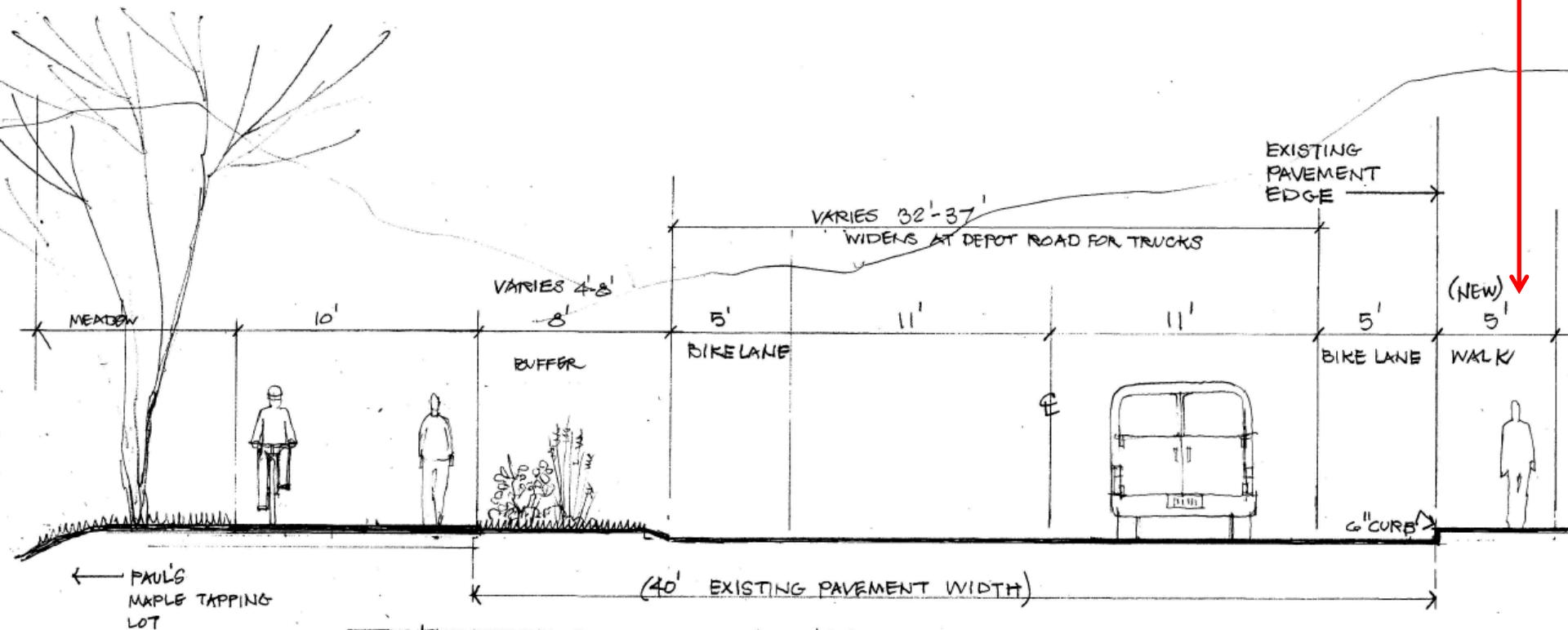


# Greenway West to Pharmacy Bridge



# Type 1 Condition at Paul's Sugarbush

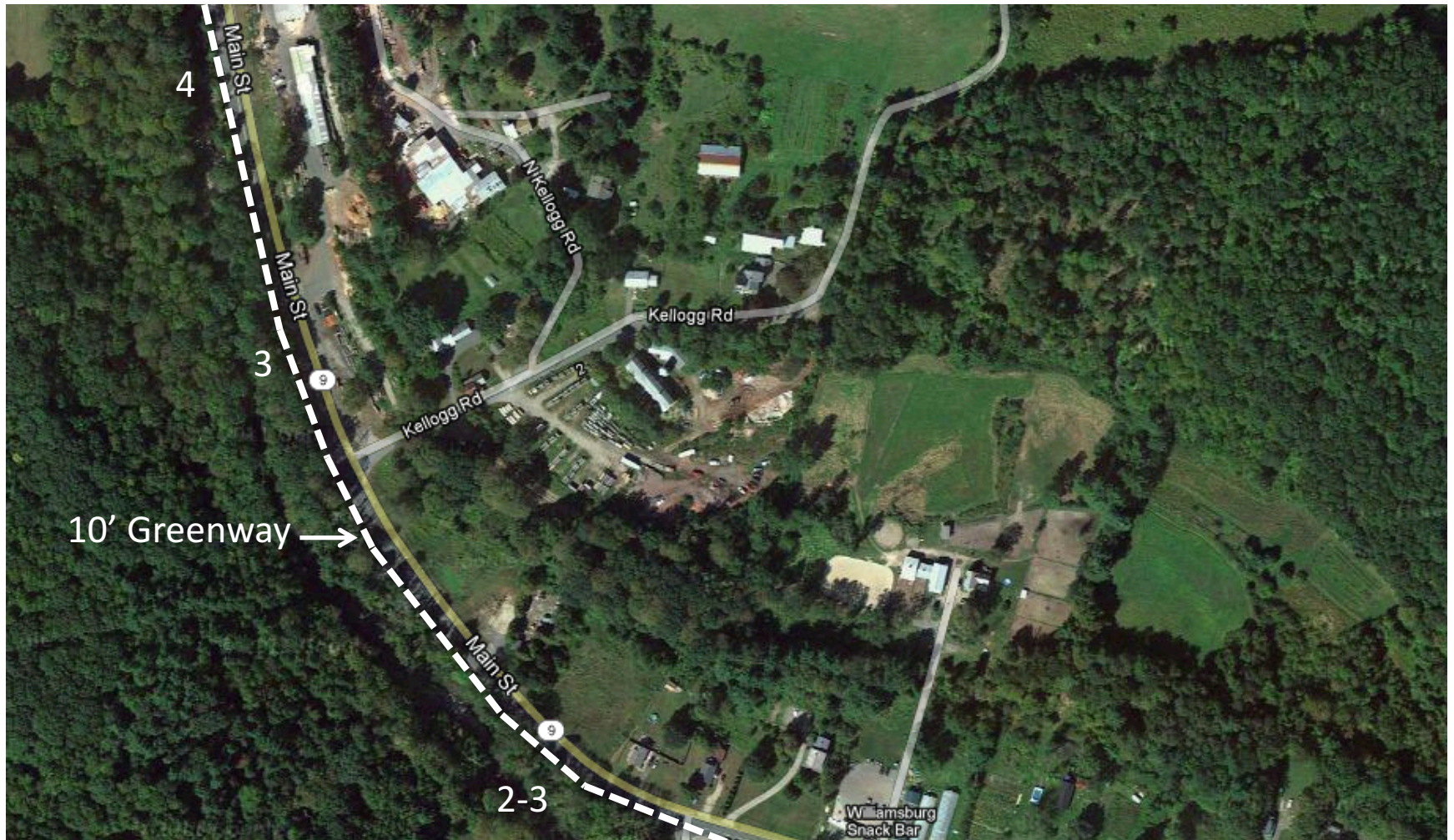
Sidewalk extension from Pharmacy to Snack Bar





# Lashway to Village Green

Edge Types Along Rte. 9





# Rte. 9 East Toward Lashway Logging





# Rte. 9 East at Lashway Logging



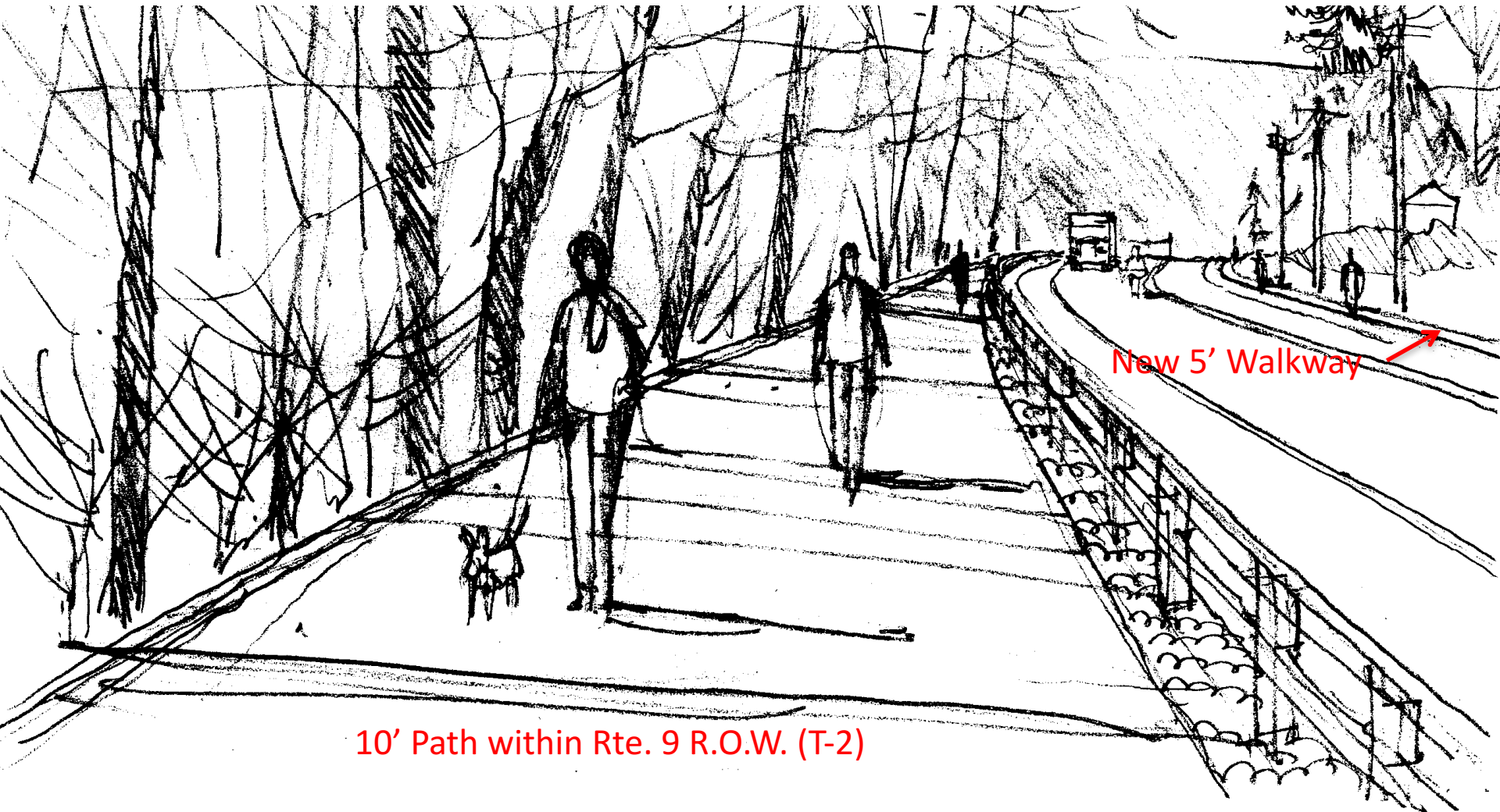


# Rte. 9 West at Lashway Logging





# Greenway West at Lashway



10' Path within Rte. 9 R.O.W. (T-2)

New 5' Walkway

# Rte. 9 West Towards Lashway Logging



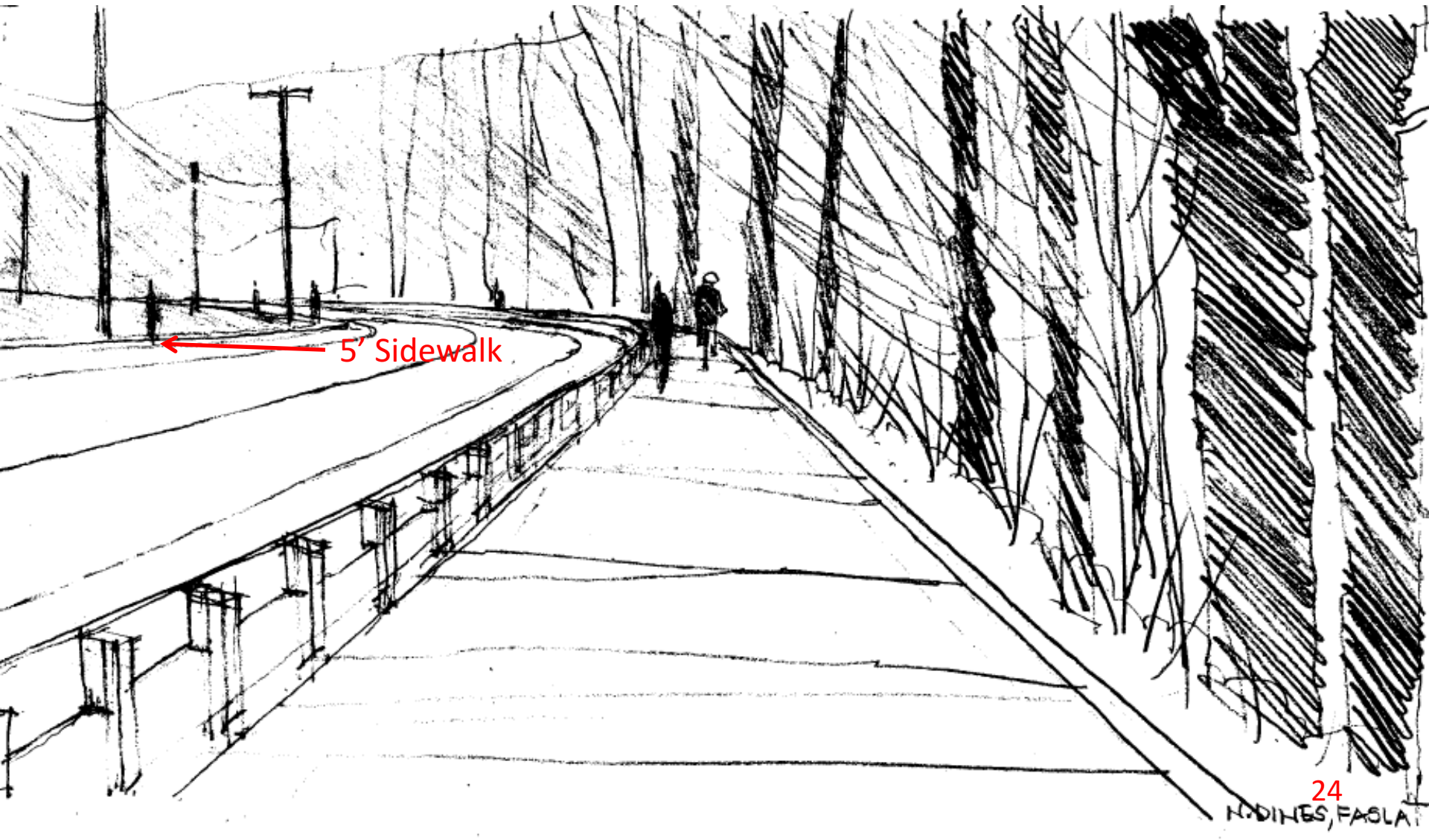


# Rte. 9 East Toward Village Green





# Greenway East Toward Village Green



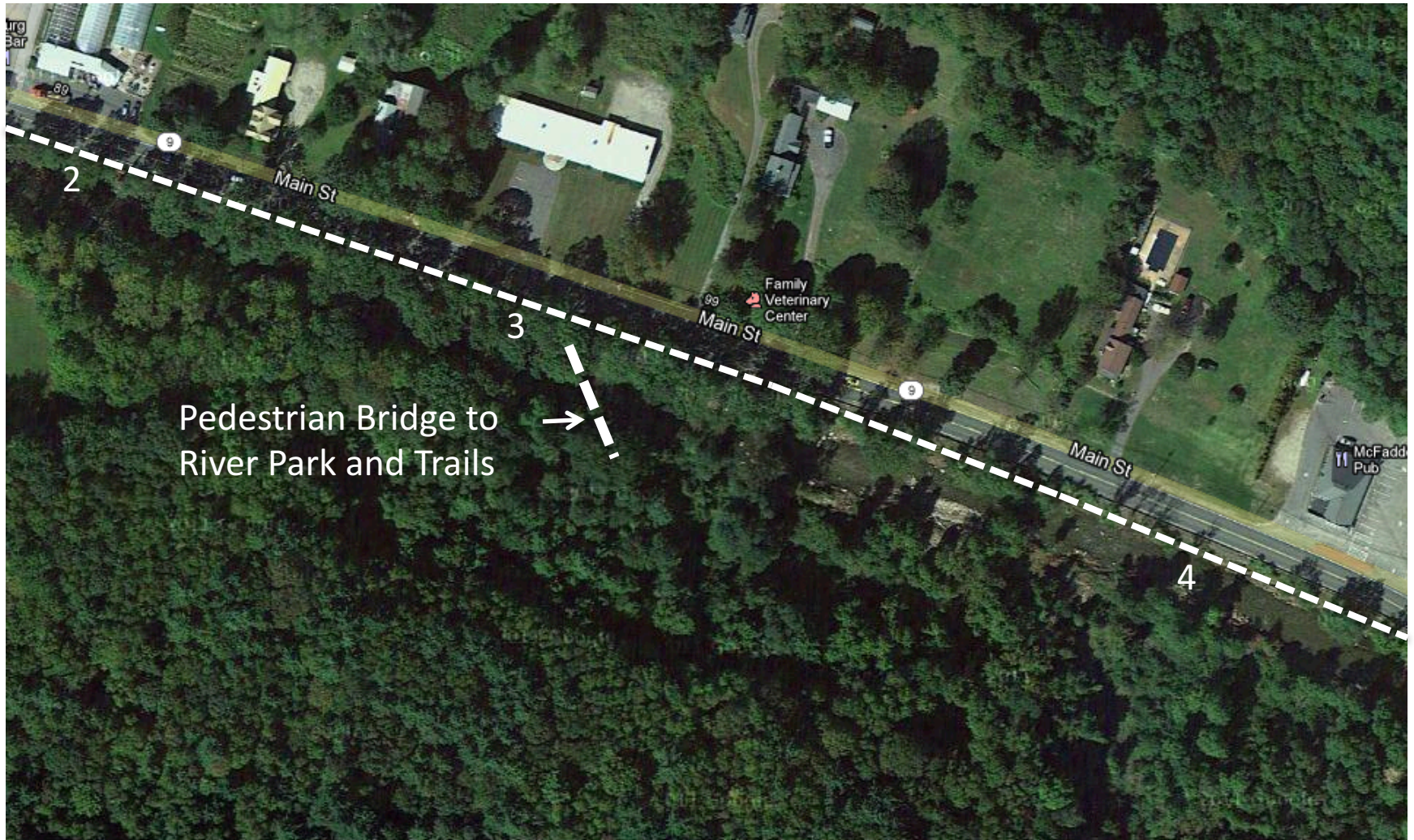


# Rte. 9 West at Bridge (Village Green)





# Village Green to Snack Bar



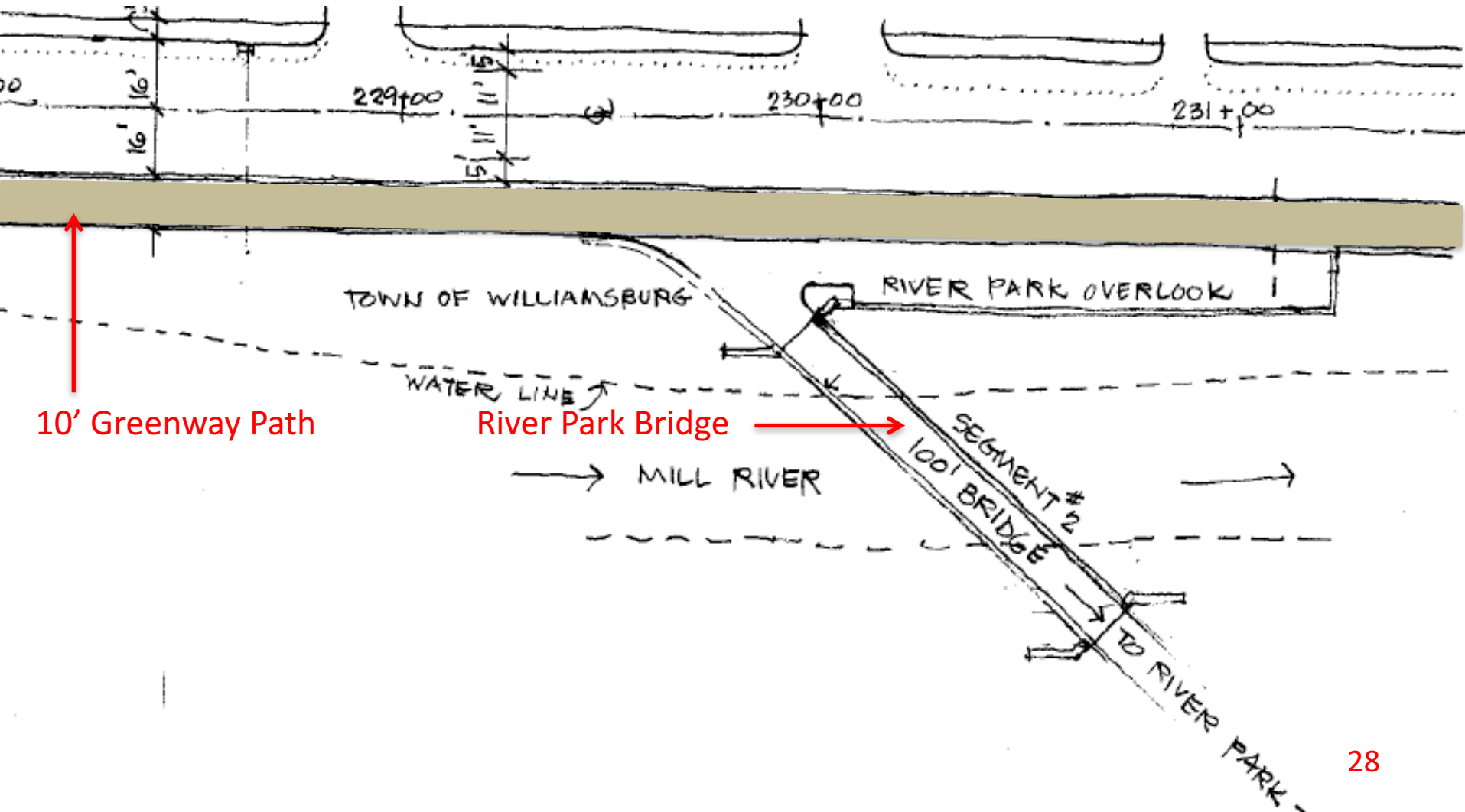


# Rte. 9 West Toward Village Green





# Plan Detail: Rest Area at Bridge to River Park





# Rte. 9 East Toward Snack Bar





# Rte. 9 West at Snack Bar



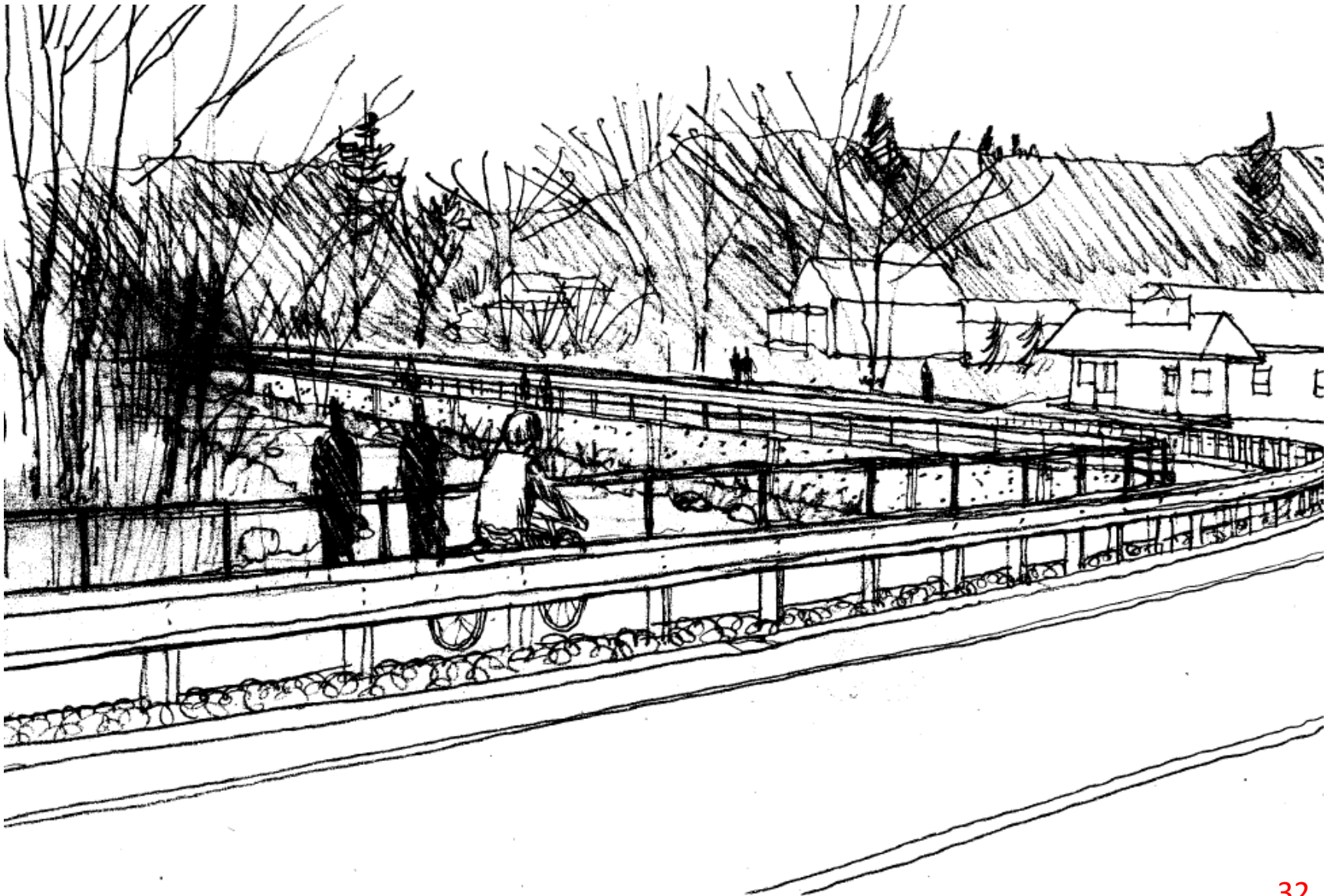


# Route 9 West at Snack Bar Curve





# Greenway at Snack Bar Curve



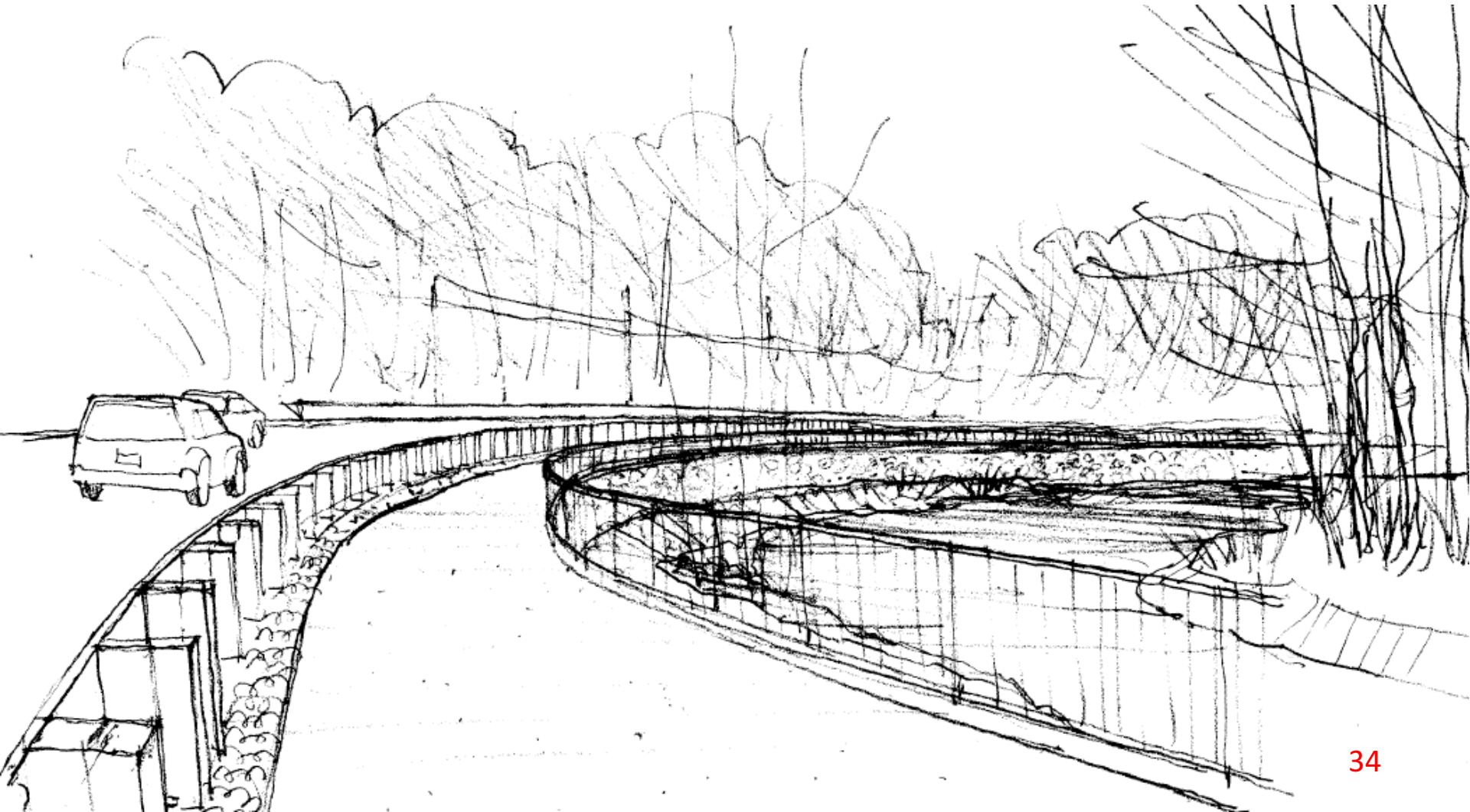


# Rte. 9 East at Snack Bar





# Greenway East: River Bend Wall





# Snack Bar to River Bend



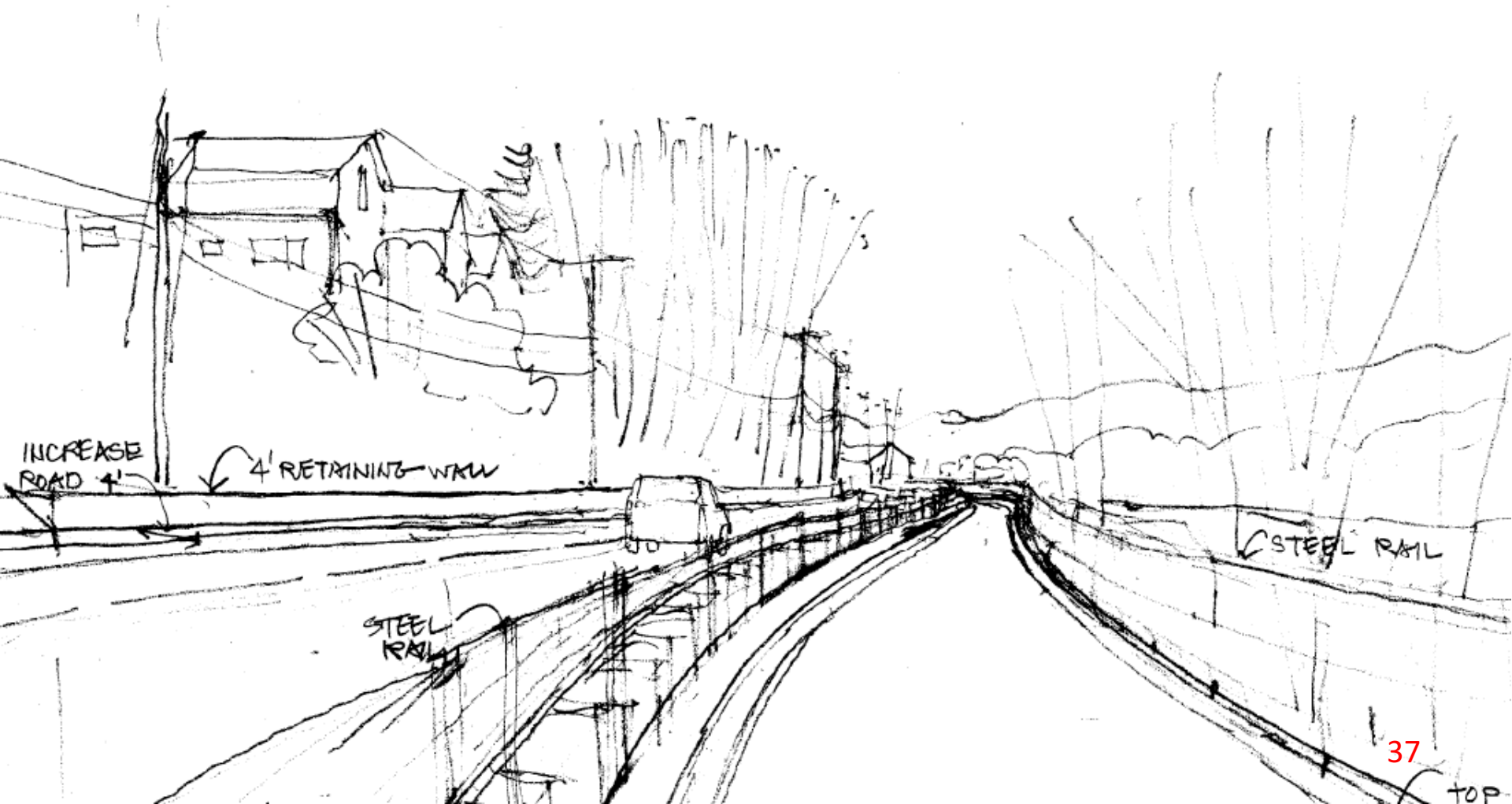


# Rte. 9 East at Close Structure/Slope





# Greenway East at Pondview Houses



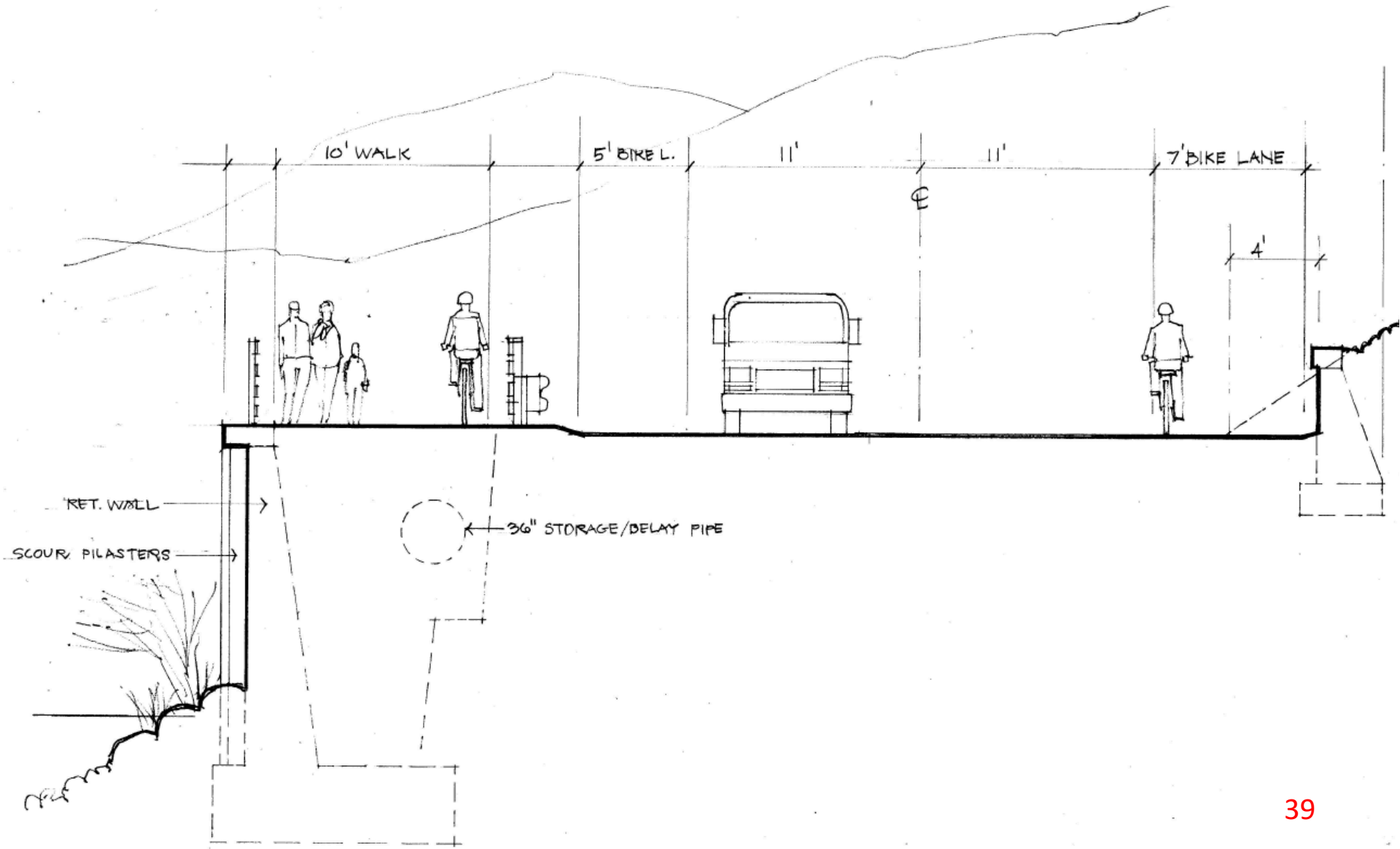


# Detail at Pondview Rd. Bank





# Scour Mitigation Wall at Rte. 9 Bend



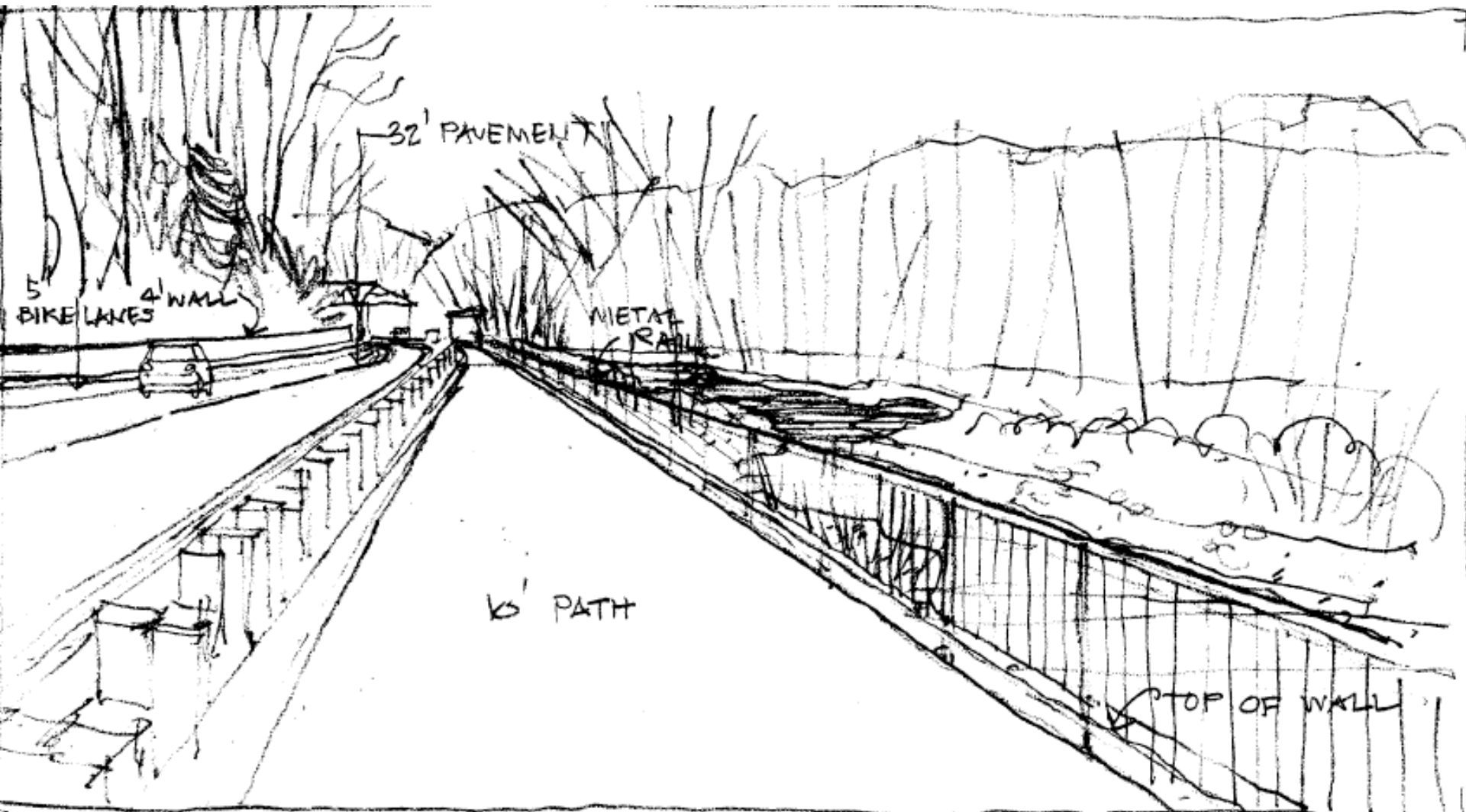


# Greenway East Towards Brassworks



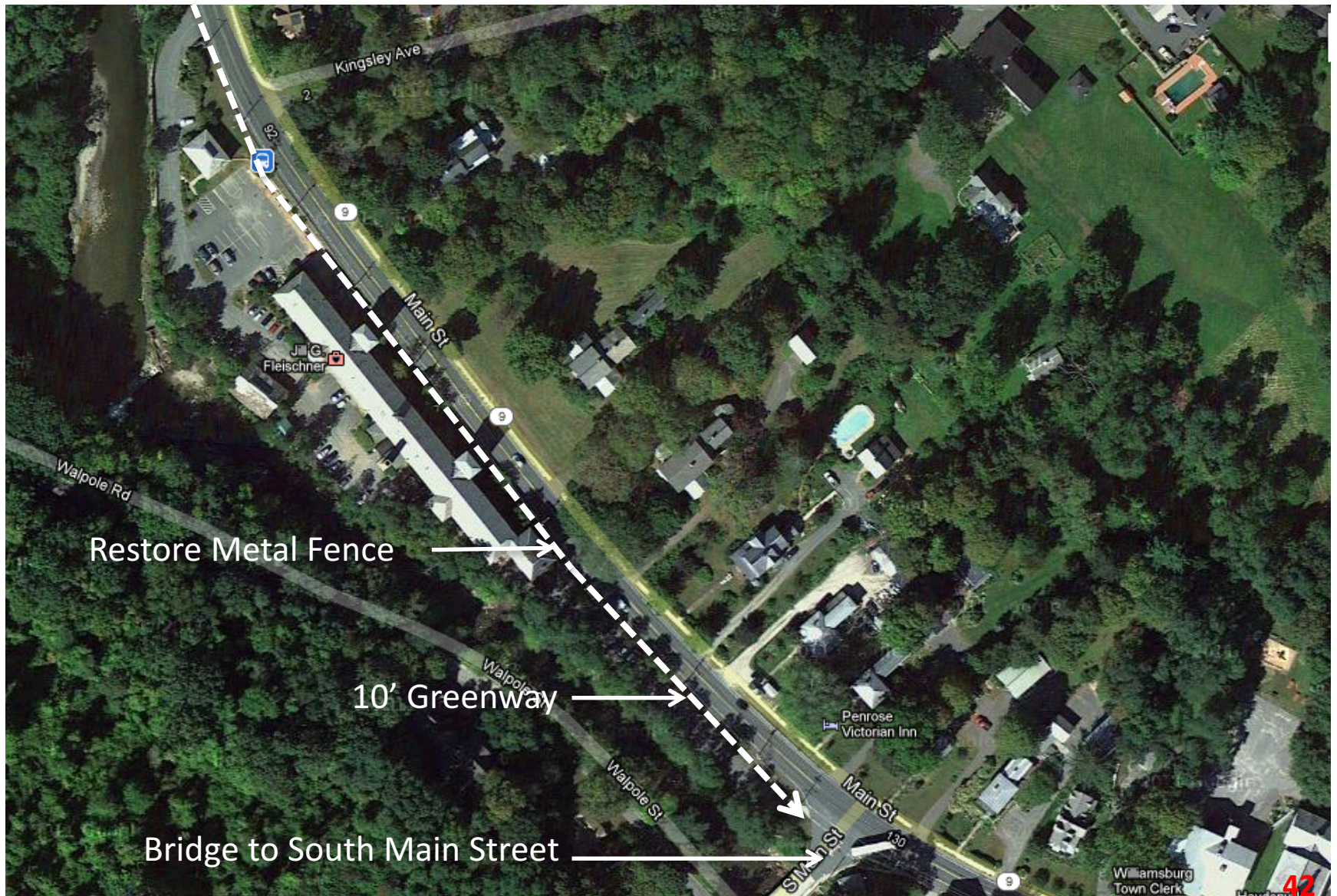


# Greenway East Toward Brassworks



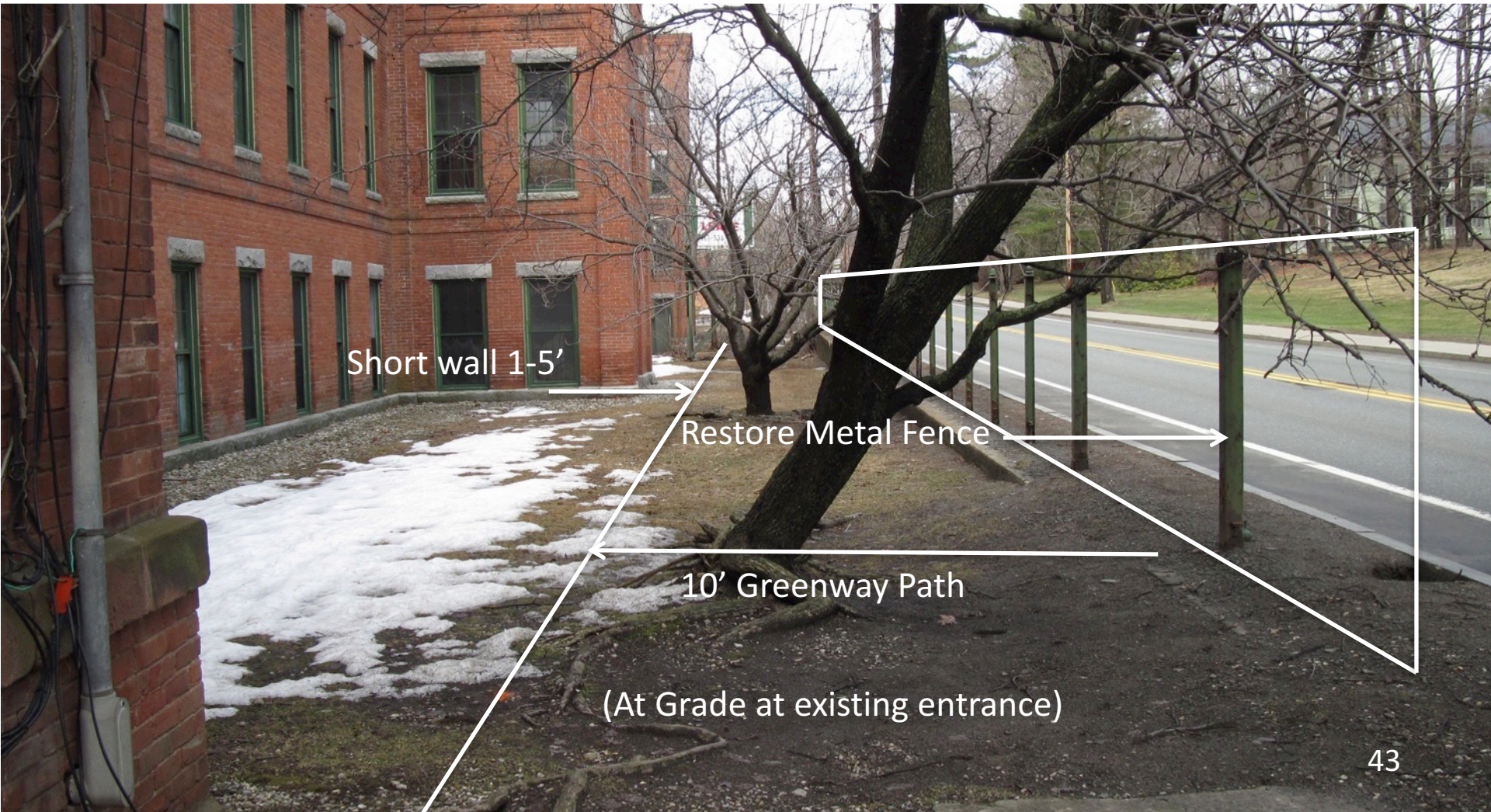


# Brassworks to S. Main St. Bridge



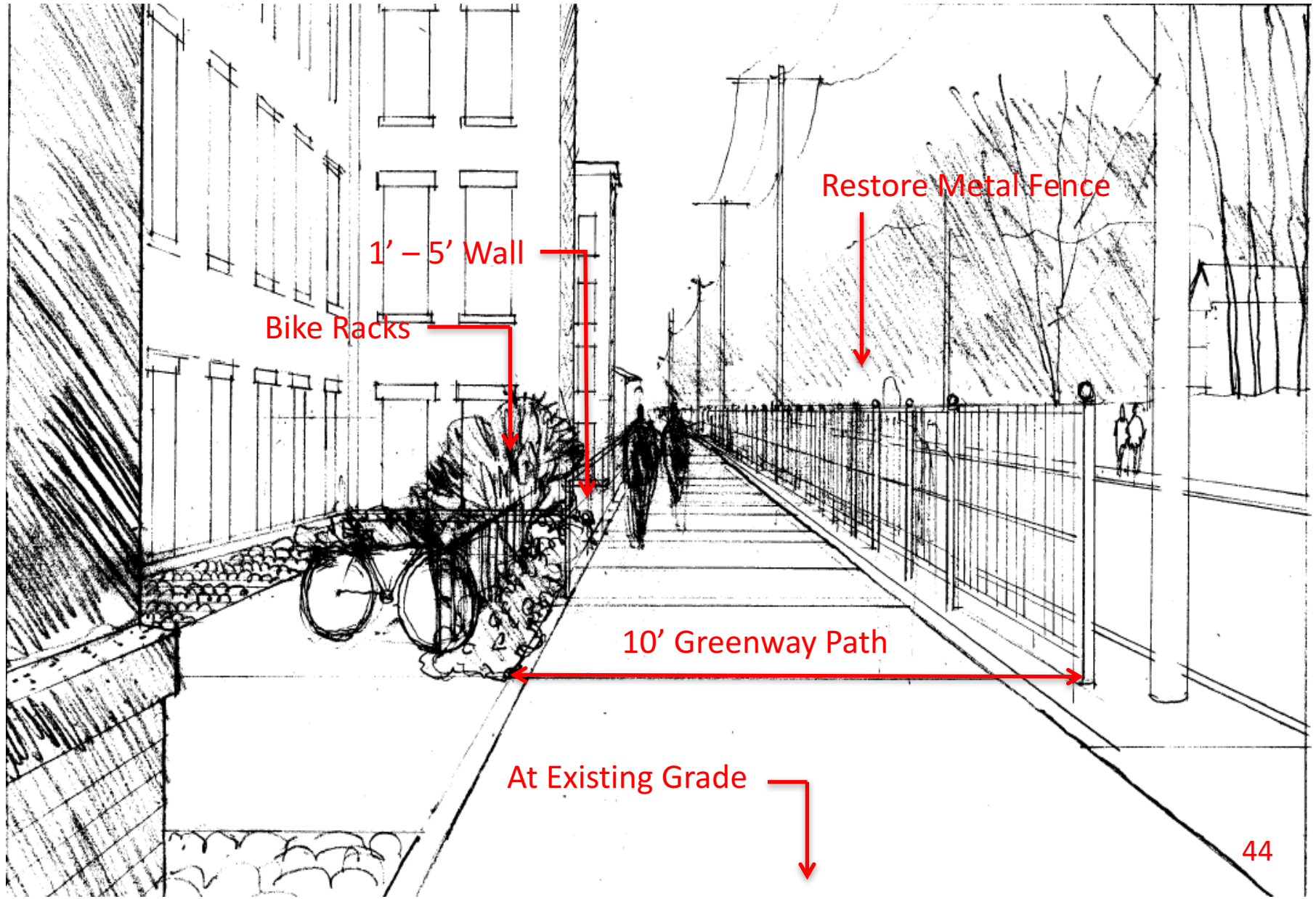


# Greenway at Brassworks Entrance



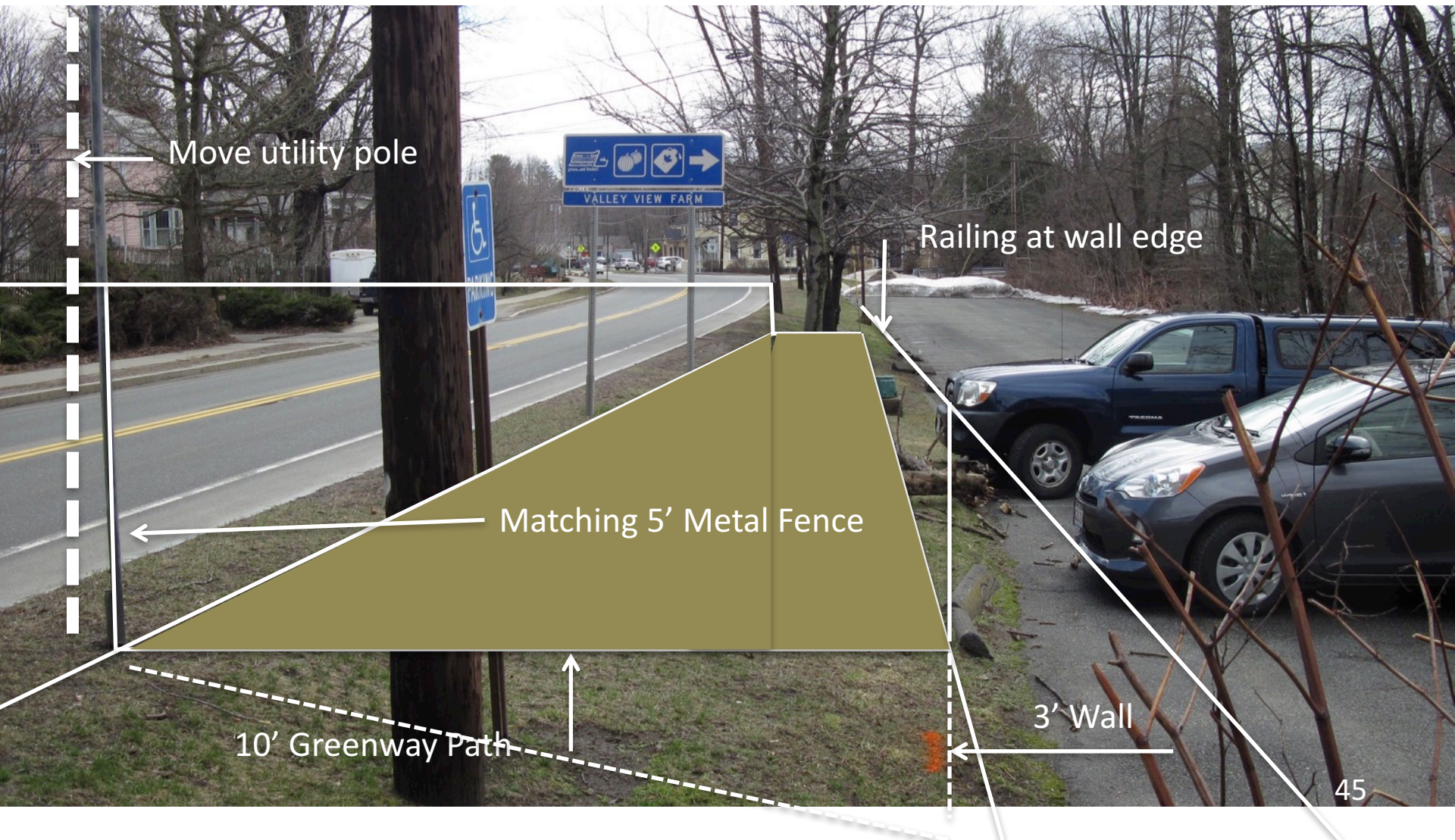


# Greenway at Brassworks Entrance



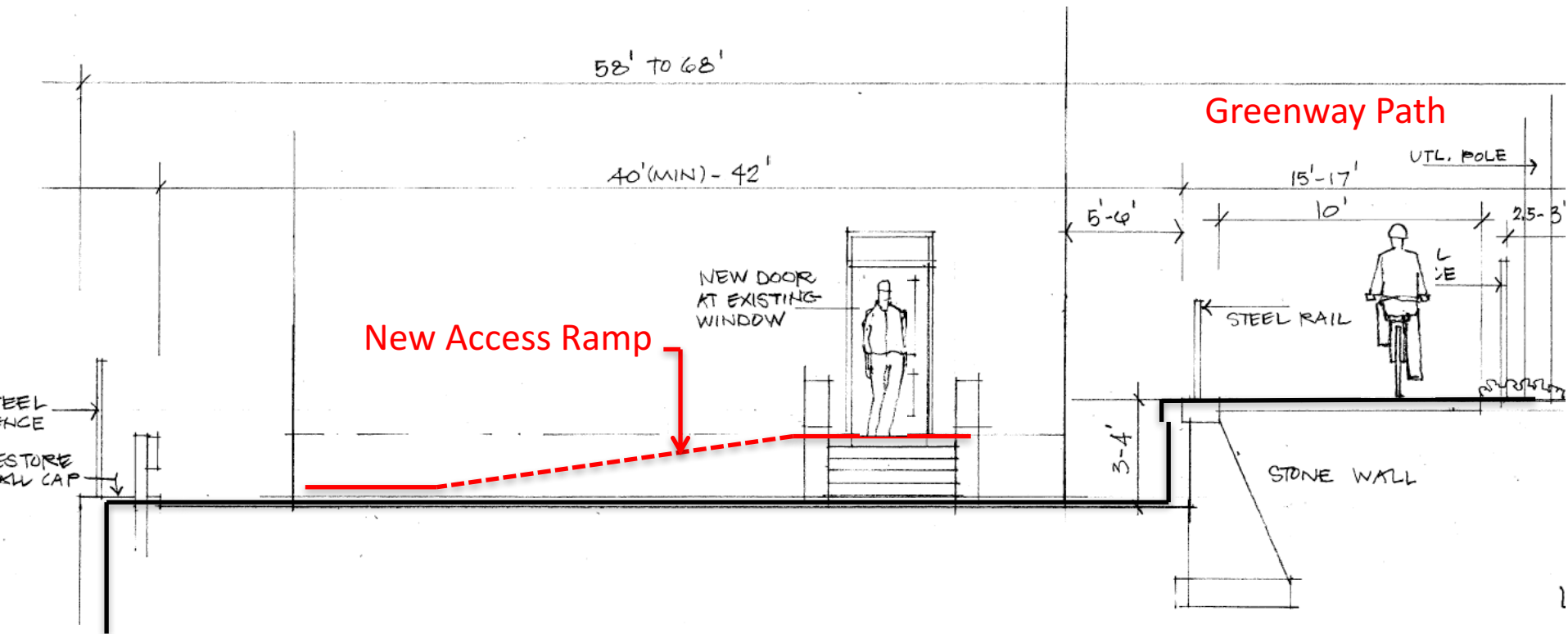


# Greenway at Brassworks Parking Lot





# Greenway at Brassworks Parking Lot



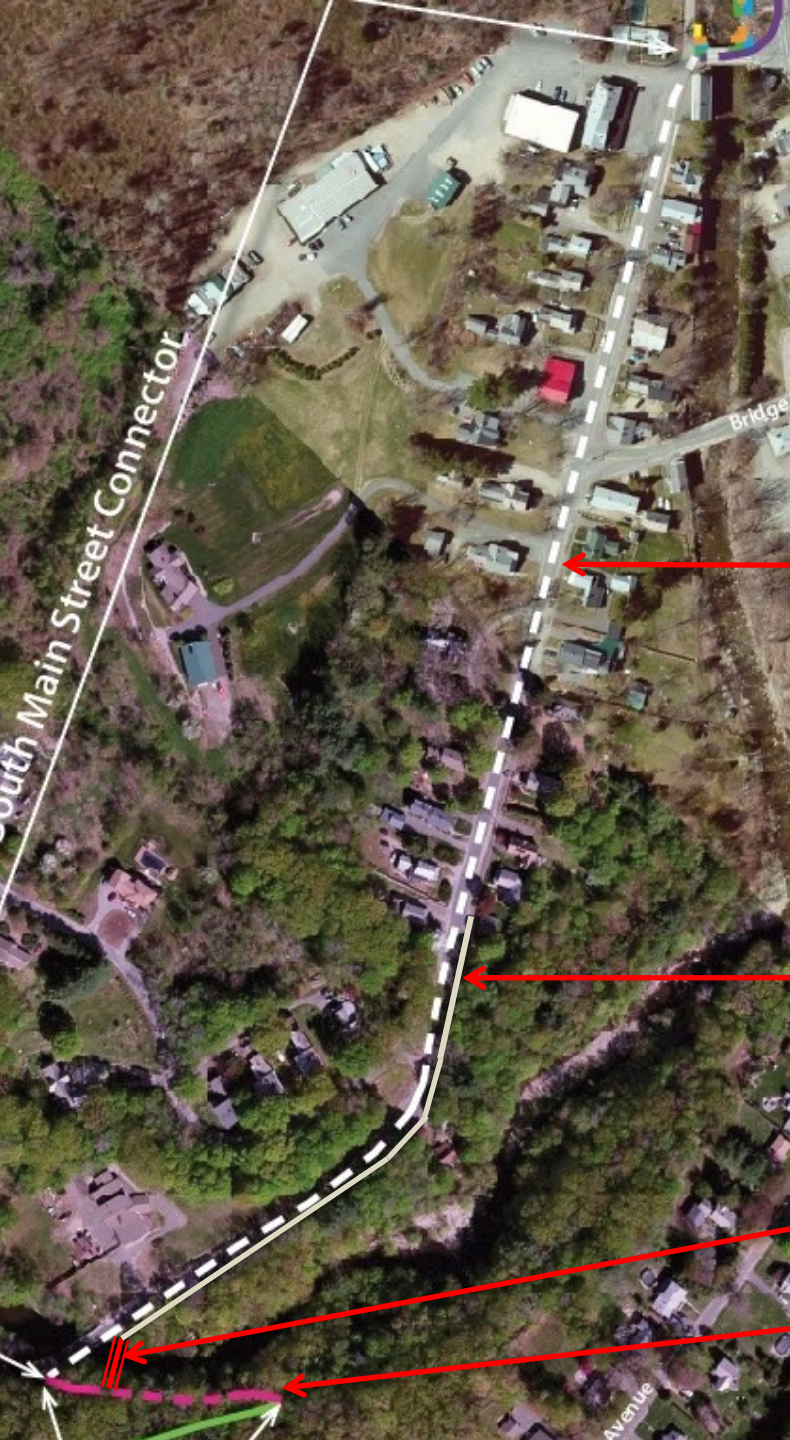


# South Main St. Bridge at Rte. 9





# South Main to Mass Central Trail Dismount



Employ Complete Streets elements  
at South Main Street link

Extend Existing 5' Sidewalk to Bridge

Install new pedestrian bridge over river

Link to Mass Central Trail from South Main Street



# New Greenway Bridge at South Main St.





# Interim Connector to Mass Central Trail at South Main Street





# Project Time Line From 2013

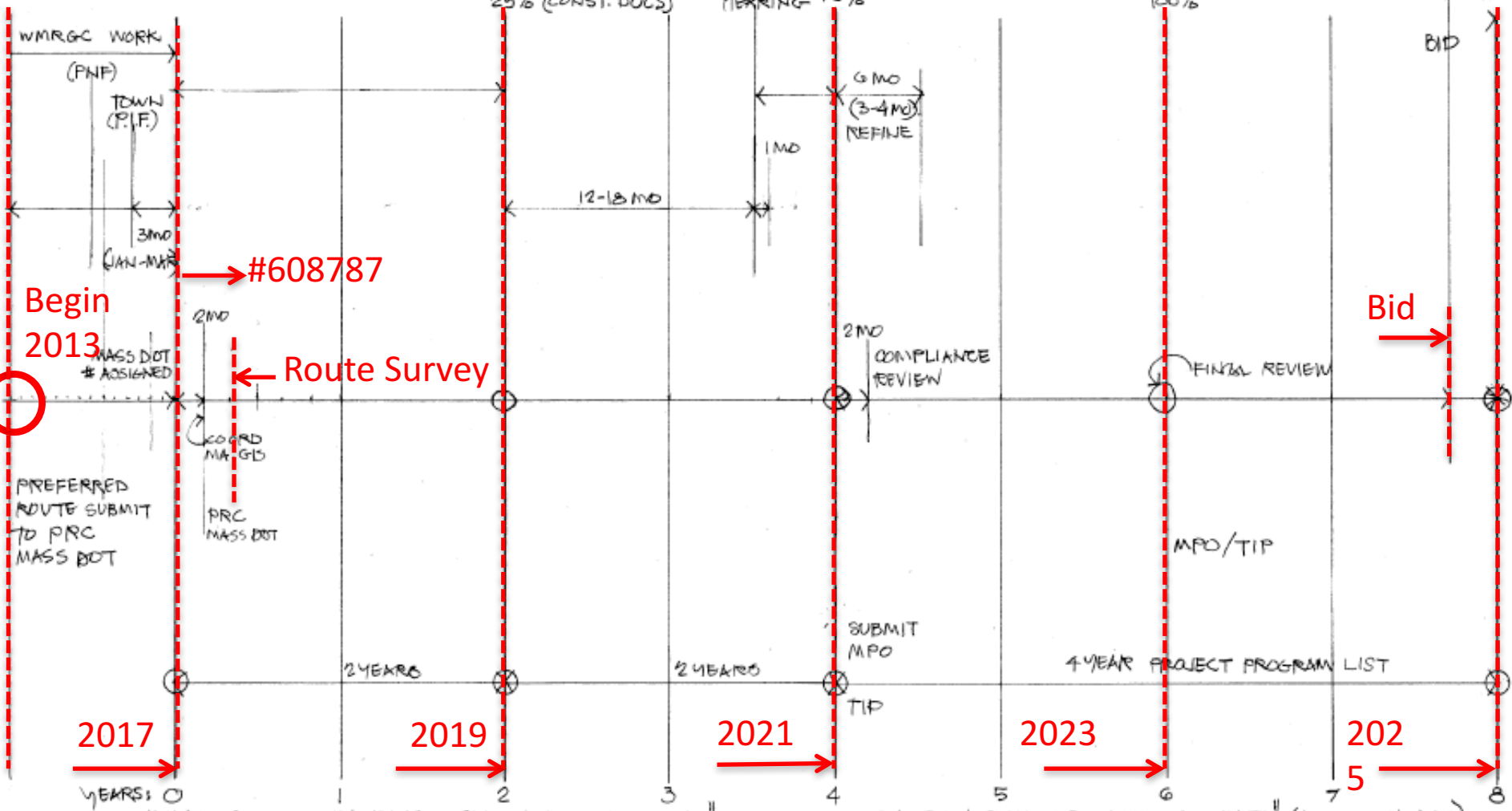
PNF - PROJECT NEED FORM

PIF - PROJECT INITIATION FORM

PRC - PROJECT REVIEW COMMITTEE

MPO - METRO. PLANNING ORGANIZATION

TIP - TRANSPORTATION IMPROVEMENT PROGRAM



WILLIAMSBURG MILL RIVER GREENWAY COMMITTEE: "PROJECT CONSTRUCTION PLANNING CRITICAL PATH" (PRELIMINARY)

N. DINES, FASLA

12/6/13 (CENOX, MA DOT)



# Route Survey Details

A 2.5 mile Route 9 Right of Way survey is required by MassDOT to document boundaries, elevations, river banks and utilities.

Additional parcels, dimensions and elevations will also help Town Planning for future Safety Complex and renovations of Town Buildings.





# Potential Funding Resources

---

## **Government Funding Resources**

- National Park Service
- National Fish and Wildlife
- Federal Highway Administration (Recreational Trails Program)
- US Environmental Protection Agency
- US Department of Energy and Environmental Affairs
- Massachusetts Department of Transportation (includes Complete Streets/Chapter 90, Safe Routes to Schools, Healthy Hampshire)\*

## **Private Funding Resources**

- Kodak American Greenways Grant
- People for Bikes
- Doppelt Family Trail Development
- Community Foundation of Western Massachusetts
- Conservation Alliance
- Alta Designs
- Valley Gives (Local Crowd Sourcing Agencies)

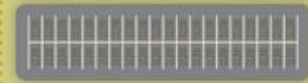


# The Mill River Greenway Linear Park:

---

- Shared Use Path Links Williamsburg and Haydenville Centers and joins the Mass Central Trail at South Main Street.
- Links to new parks, rest areas, schools businesses, historical interpretive networks and trails.
- Mitigates Mill River scour at the Brassworks Bend, and restores aquatic habitats.
- Adds width to the narrow curve for two bike lanes and two 11' travel lanes and restores existing degraded banks.





of Americans say they would like more  
**BIKE FACILITIES**  
in their communities.

50% < 3 miles

40% < 2 miles

28% < 1 mile

112 / [www.theblackboard.com/forums/ViewThread.asp](http://www.theblackboard.com/forums/ViewThread.asp)

[illegible]

**\$8,758**

# That's more than they spend on

# FOOD.

