

SWCA

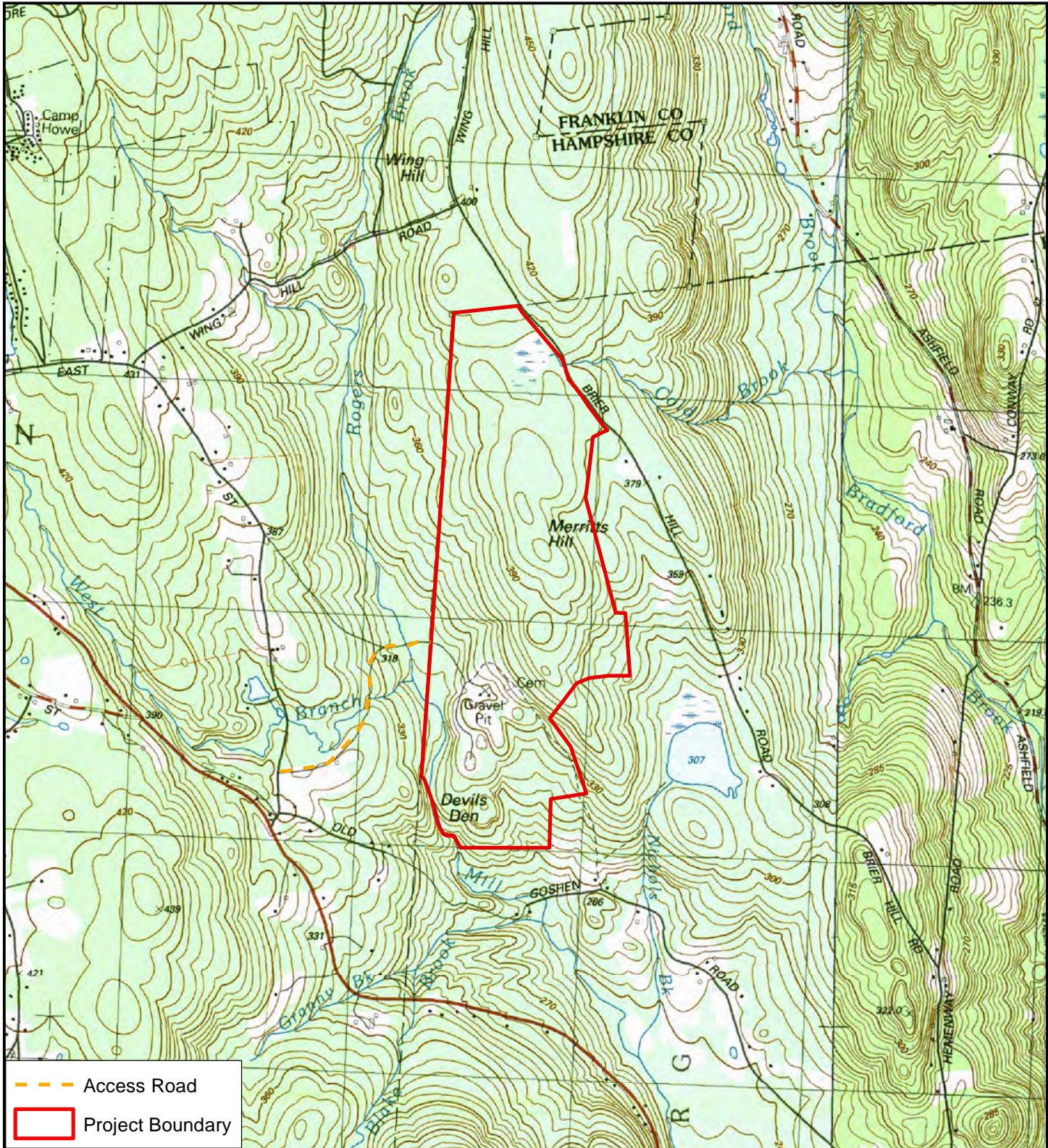
## FIGURES:

Figure 1: USGS Topographic Map

Figure 2: Orthophotograph

Figure 3: FEMA Flood Rate Maps

Figure 4: NHESP



**Figure 1. USGS Topographic Map**

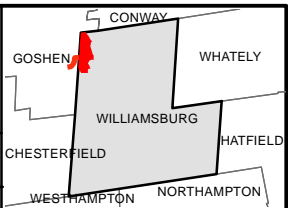
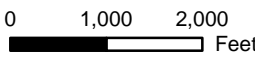
**103 Briar Hill Road  
Williamsburg, MA**

25 Aug 2017  
SWCA Project No.: 43889

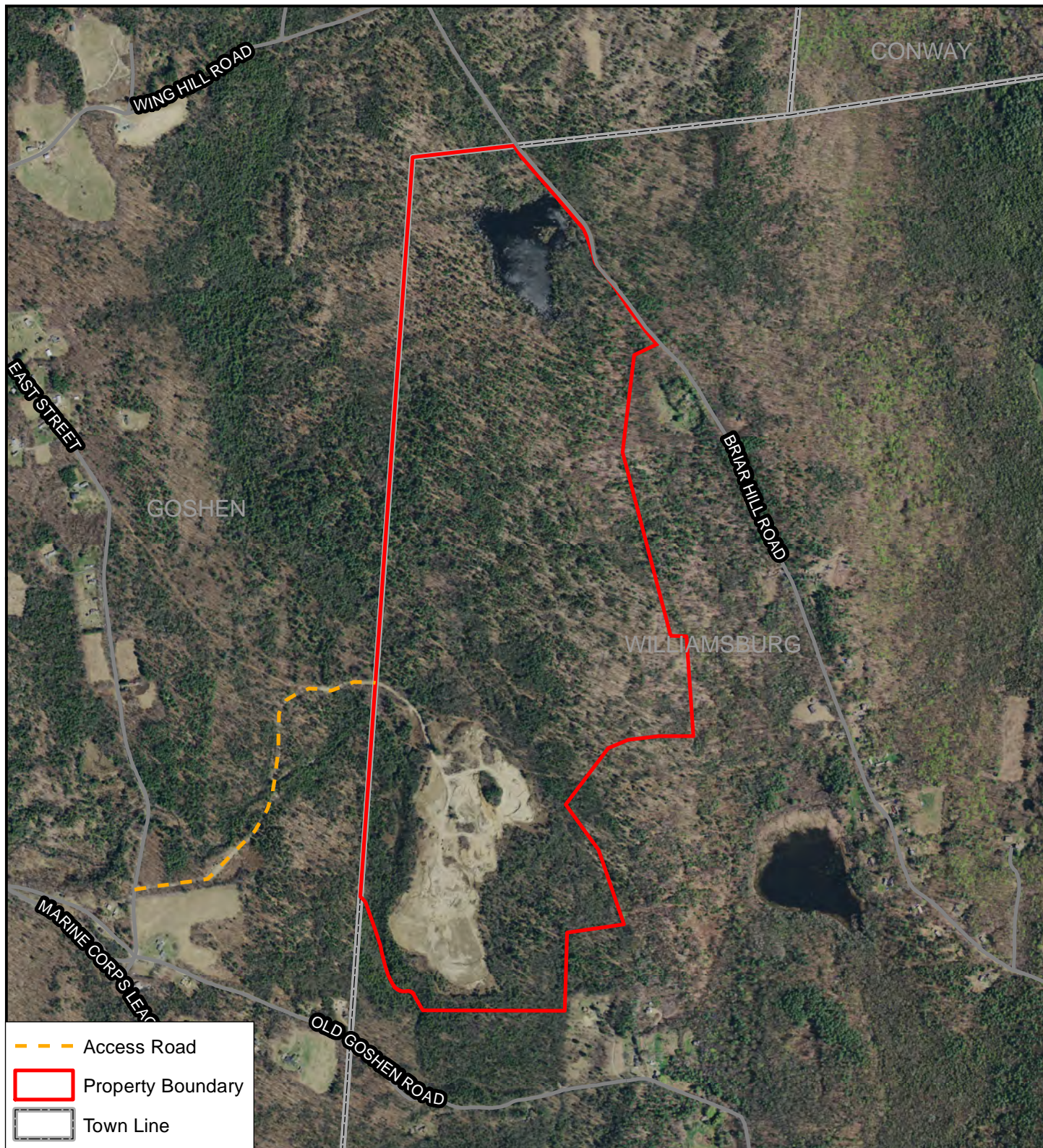
Data Source: Office of Geographic Information (MassGIS)

USGS Topographic Quadrangle Images

USGS Goshen Quadrangle



Latitude 42.43223° N  
Longitude 72.7675° W



- - - Access Road  
 Property Boundary  
 Town Line

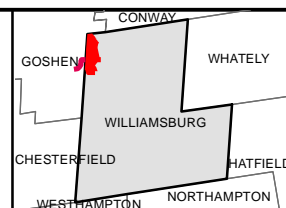
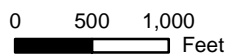


**Fig 2. Orthophotograph**

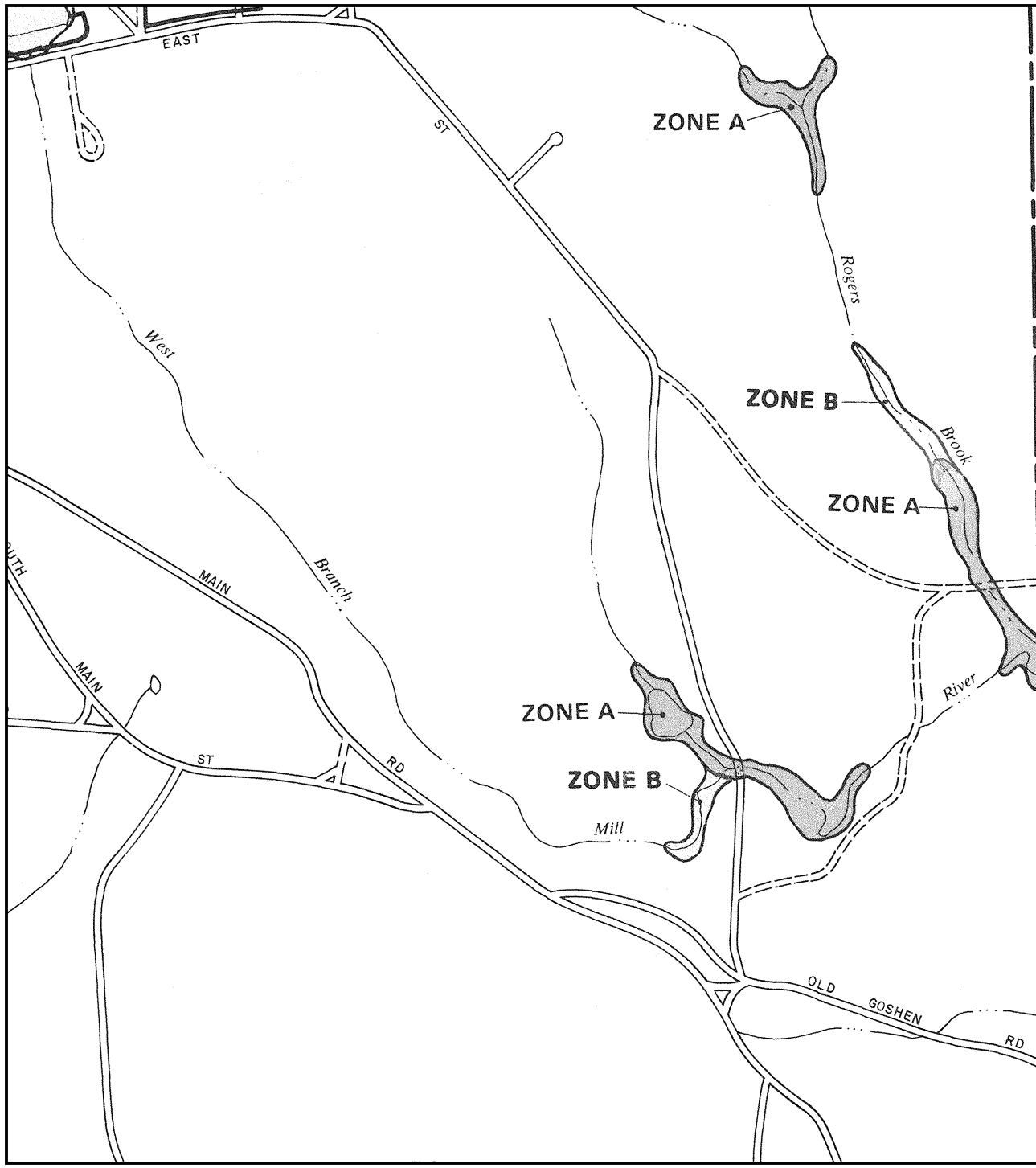
**103 Briar Hill Road  
Williamsburg, MA**

25 Aug 2017  
SWCA Project No.: 43889

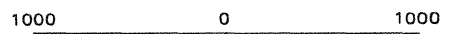
Data Source: Office of Geographic Information (MassGIS)  
USGS Color Ortho Imagery (2013/2014)



Latitude 42.43223° N  
Longitude 72.7675° W



APPROXIMATE SCALE



NATIONAL FLOOD INSURANCE PROGRAM

FLOOD INSURANCE RATE MAP

**TOWN OF  
GOSHEN,  
MASSACHUSETTS  
HAMPSHIRE COUNTY**

COMMUNITY-PANEL NUMBER  
250161 0001 C

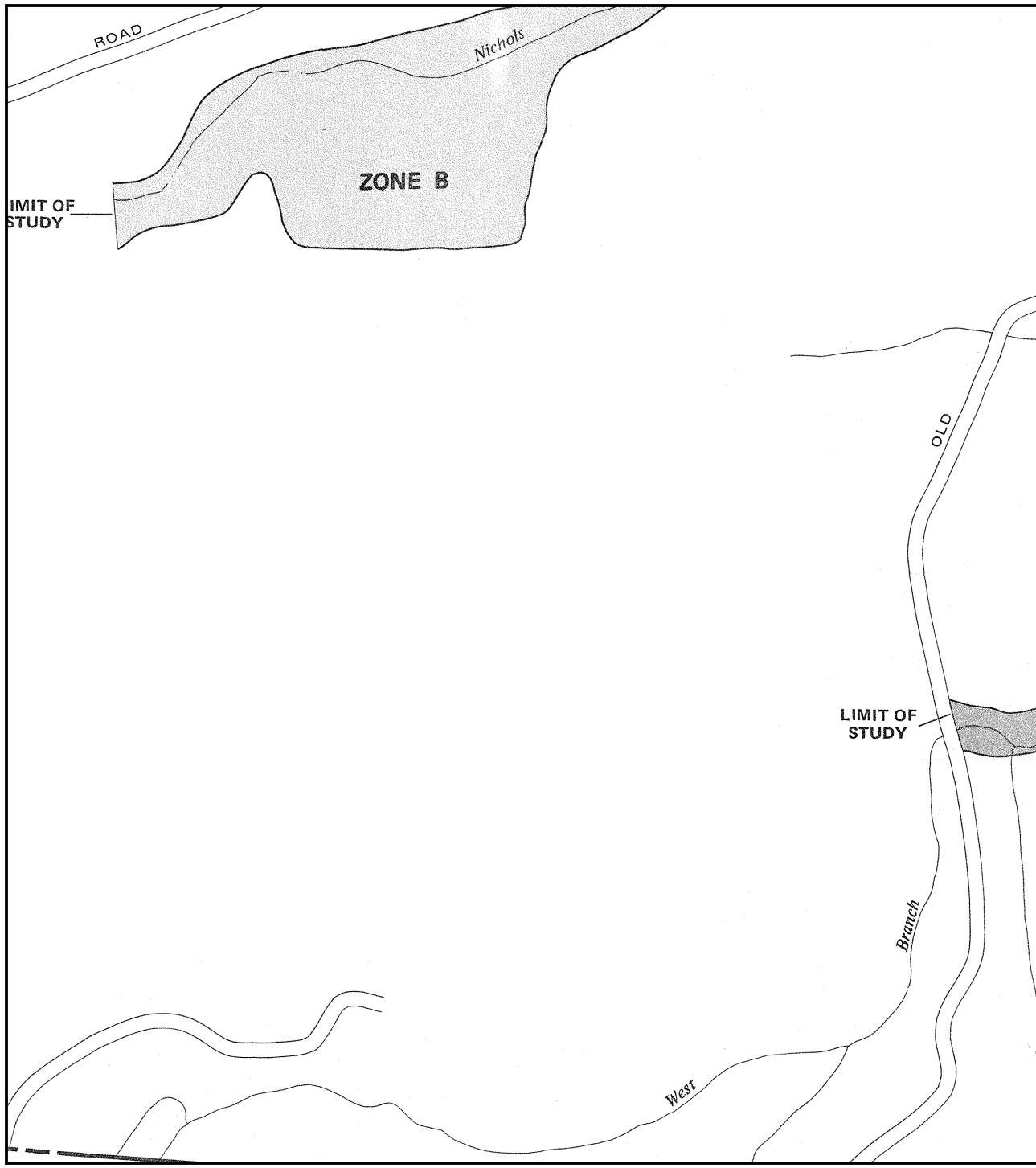
ONLY PANEL PRINTED

MAP REVISED  
MARCH 7, 1980

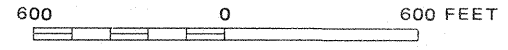


U.S. DEPARTMENT OF HOUSING  
AND URBAN DEVELOPMENT  
FEDERAL INSURANCE ADMINISTRATION

This is an official copy of a portion of the above referenced flood map. It was extracted using F-MIT On-Line. This map does not reflect changes or amendments which may have been made subsequent to the date on the title block. For the latest product information about National Flood Insurance Program flood maps check the FEMA Flood Map Store at [www.msc.fema.gov](http://www.msc.fema.gov)



APPROXIMATE SCALE



NATIONAL FLOOD INSURANCE PROGRAM

**FIRM**  
FLOOD INSURANCE RATE MAP

TOWN OF  
**WILLIAMSBURG,**  
MASSACHUSETTS  
HAMPSHIRE COUNTY

PANEL 3 OF 4  
(SEE MAP INDEX FOR PANELS NOT PRINTED)

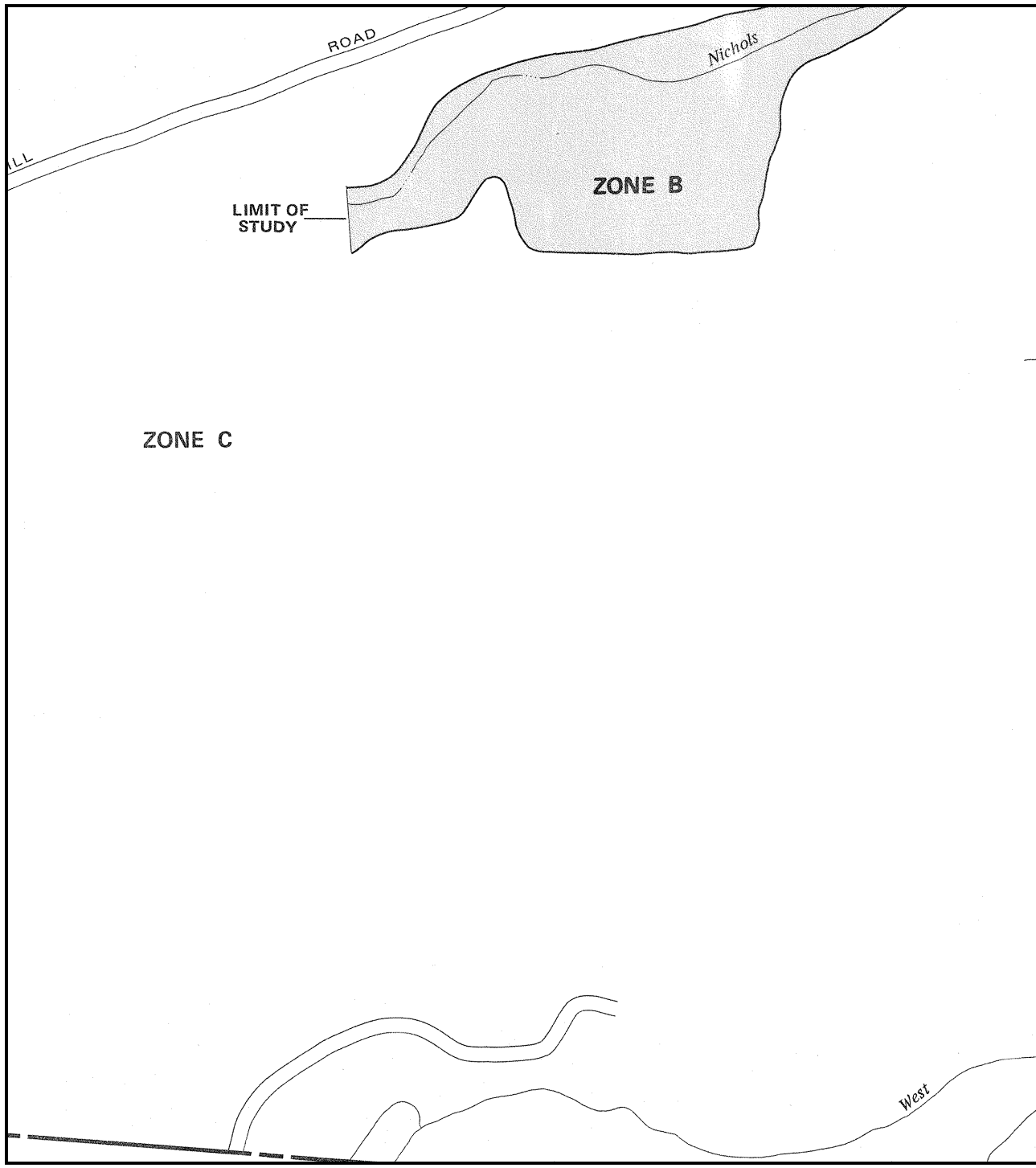
COMMUNITY-PANEL NUMBER  
250174 0003 B

EFFECTIVE DATE:  
JUNE 1, 1981

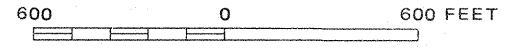


federal emergency management agency  
federal insurance administration

This is an official copy of a portion of the above referenced flood map. It was extracted using F-MIT On-Line. This map does not reflect changes or amendments which may have been made subsequent to the date on the title block. For the latest product information about National Flood Insurance Program flood maps check the FEMA Flood Map Store at [www.msc.fema.gov](http://www.msc.fema.gov)



APPROXIMATE SCALE



NATIONAL FLOOD INSURANCE PROGRAM

**FIRM**  
FLOOD INSURANCE RATE MAP

TOWN OF  
**WILLIAMSBURG,**  
MASSACHUSETTS  
HAMPSHIRE COUNTY

PANEL 3 OF 4  
(SEE MAP INDEX FOR PANELS NOT PRINTED)

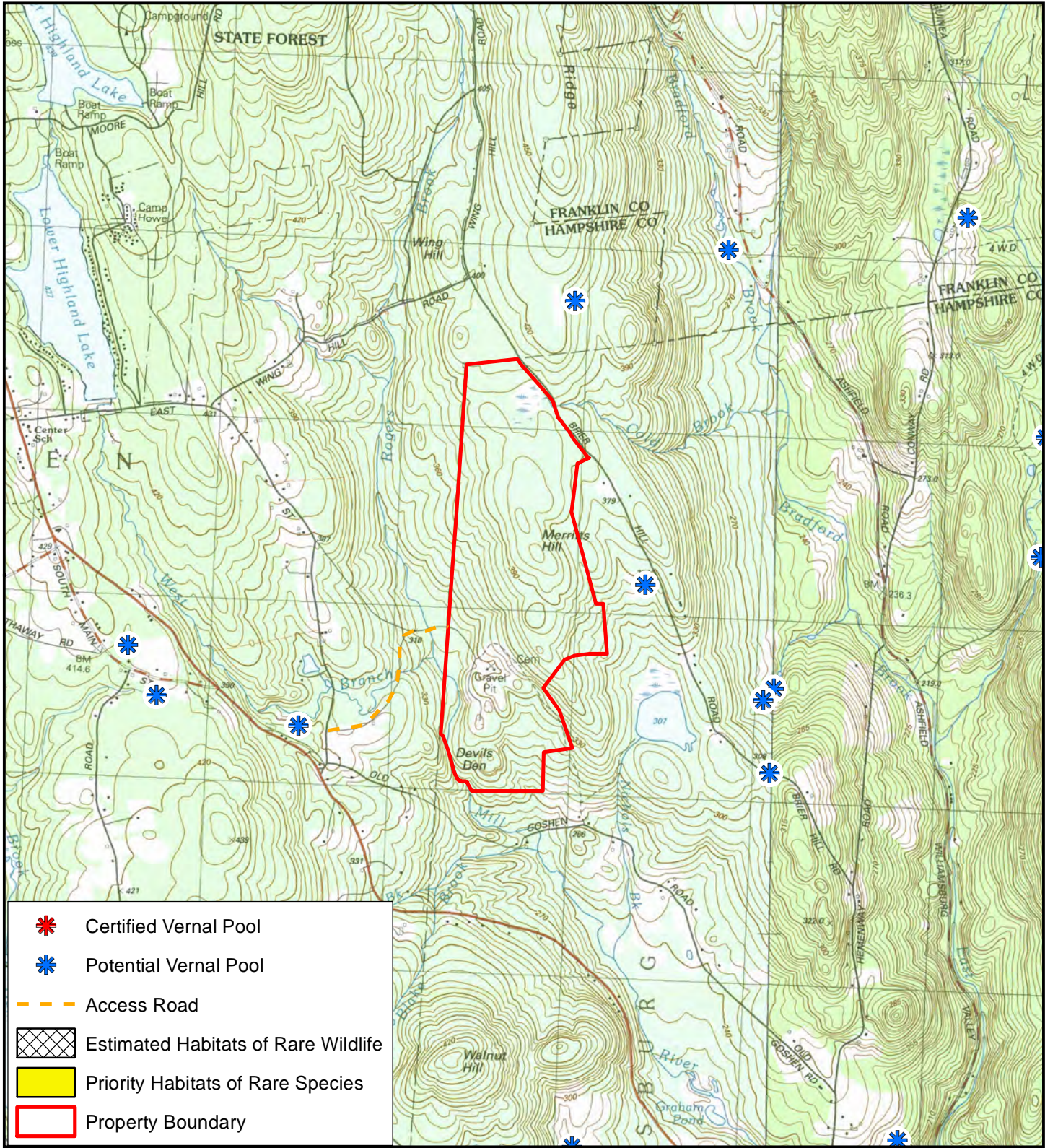
COMMUNITY-PANEL NUMBER  
250174 0003 B




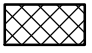


EFFECTIVE DATE:  
JUNE 1, 1981



federal emergency management agency  
federal insurance administration

This is an official copy of a portion of the above referenced flood map. It was extracted using F-MIT On-Line. This map does not reflect changes or amendments which may have been made subsequent to the date on the title block. For the latest product information about National Flood Insurance Program flood maps check the FEMA Flood Map Store at [www.msc.fema.gov](http://www.msc.fema.gov)



-  Certified Vernal Pool
-  Potential Vernal Pool
-  Access Road
-  Estimated Habitats of Rare Wildlife
-  Priority Habitats of Rare Species
-  Property Boundary

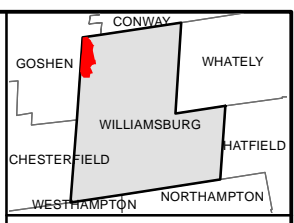
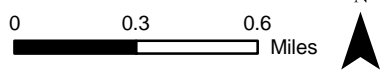
**Figure 4. NHESP**

**103 Briar Hill Road  
Williamsburg, MA**

25 Aug 2017  
SWCA Project No.:43889

Data Source: Office of Geographic Information (MassGIS)

NHESP Priority and Estimated Habitats of Rare Species, August 2017  
NHESP Certified Vernal Pools, Aug 2017  
NHESP Potential Vernal Pools



Latitude 42.43223° N  
Longitude 72.7675° W

